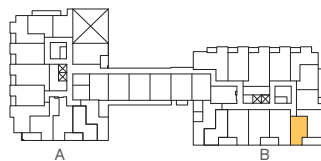
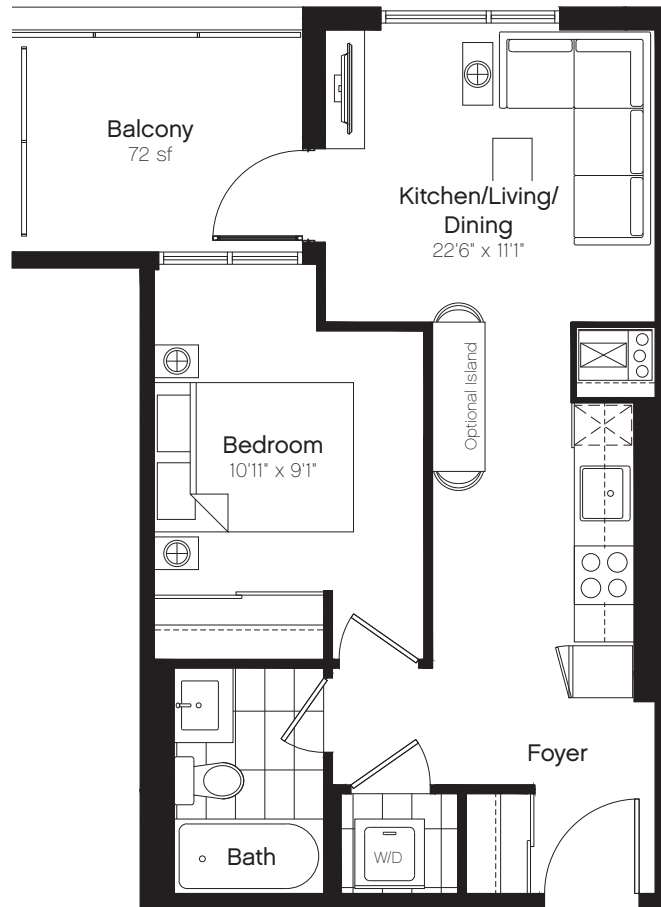
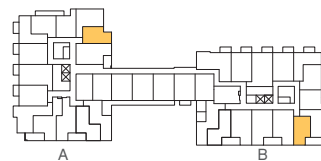


# Type 1A

1 Bed, 1 Bath  
Interior: 480 sf  
Total: 552 sf



Level 2

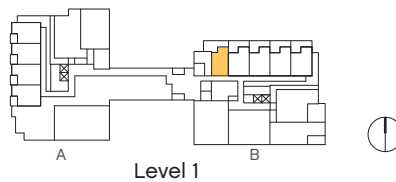
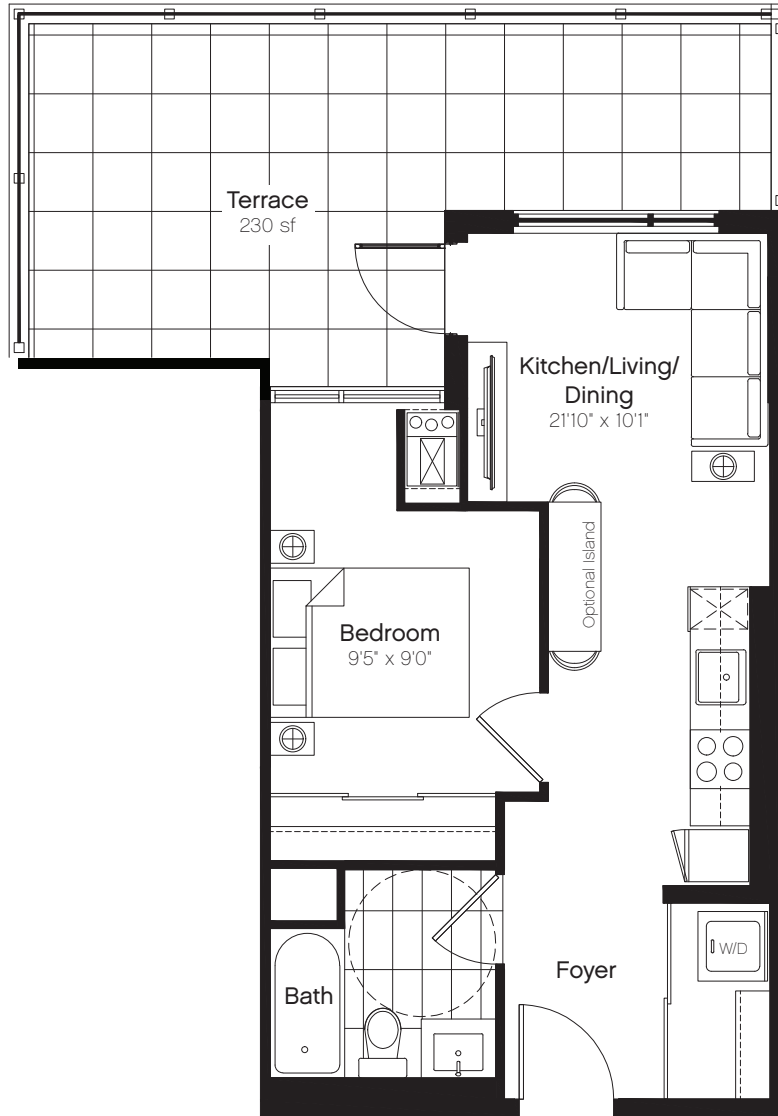


Level 3



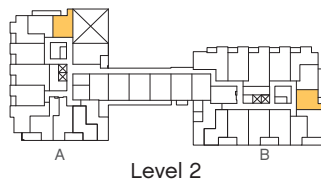
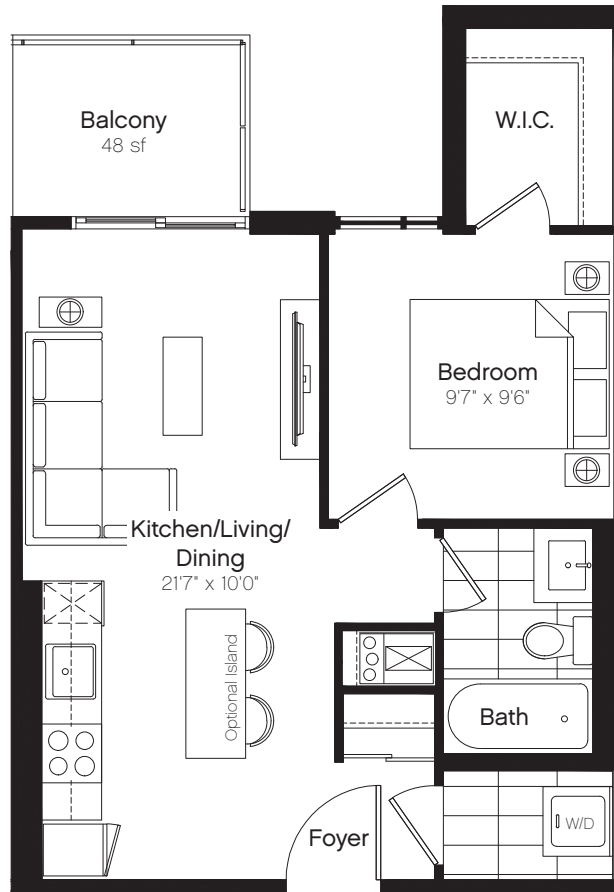
# Type 1B

1 Bed, 1 Bath  
Interior: 497 sf  
Total: 727 sf



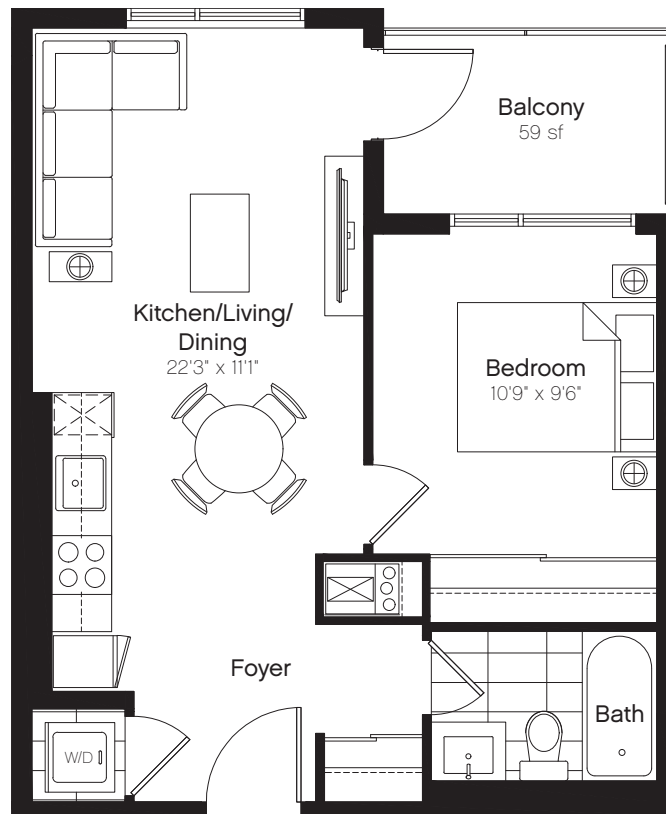
# Type 1C

1 Bed, 1 Bath  
Interior: 510 sf  
Total: 558 sf

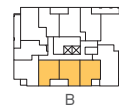


# Type 1D

1 Bed, 1 Bath  
Interior: 520 sf  
Total: 579 sf



Note: Typical Balcony Condition Level 5-14

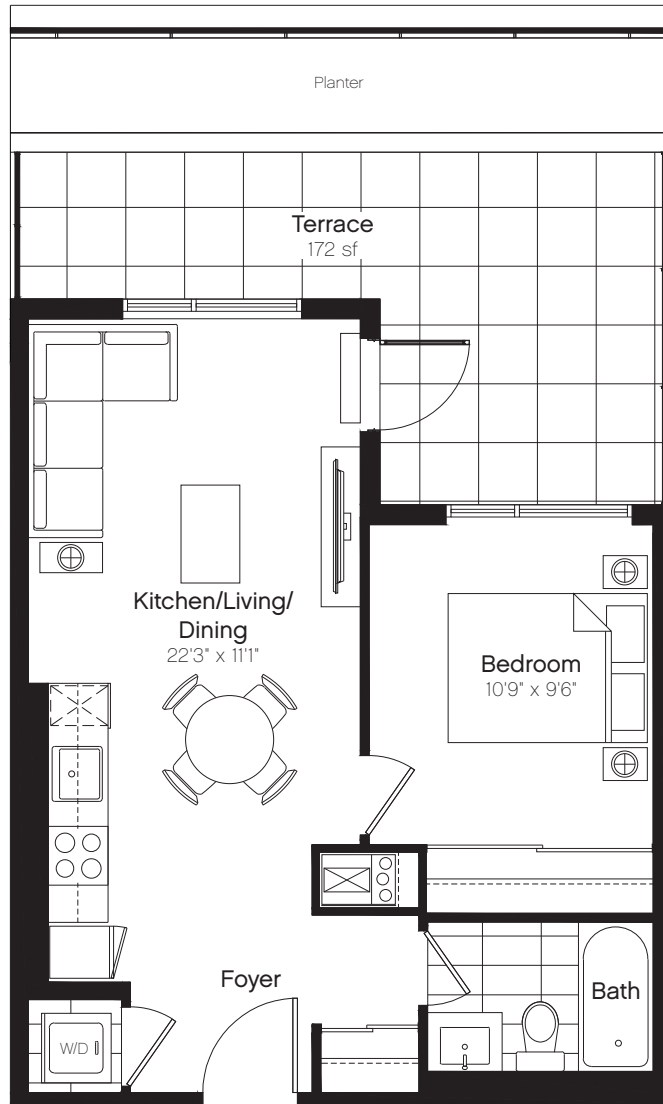


Level 5-14

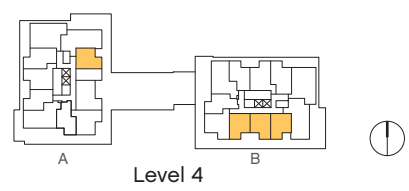


# Type 1D-T

1 Bed, 1 Bath  
Interior: 520 sf  
Total: 692 sf



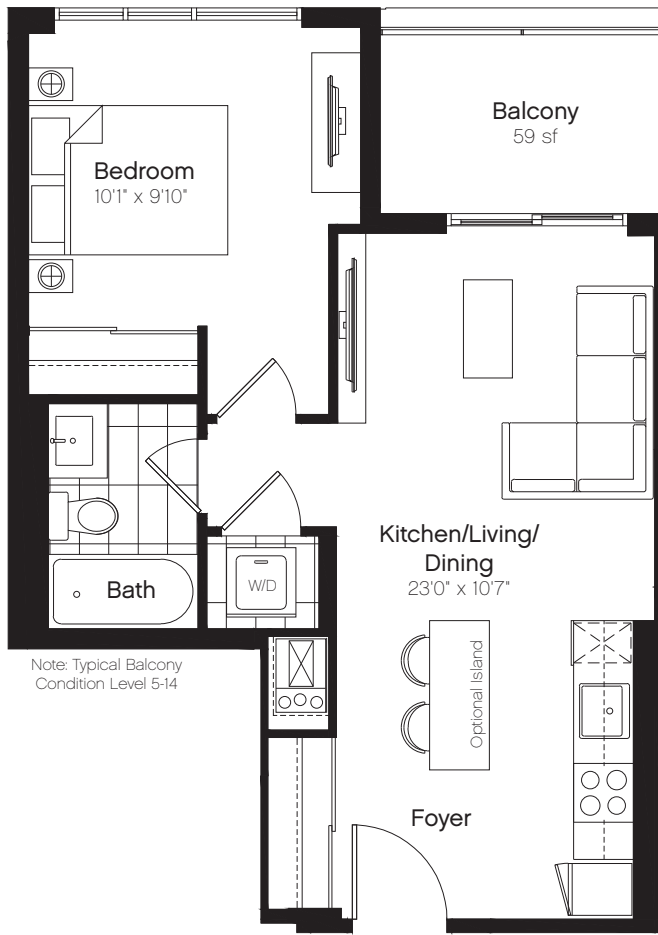
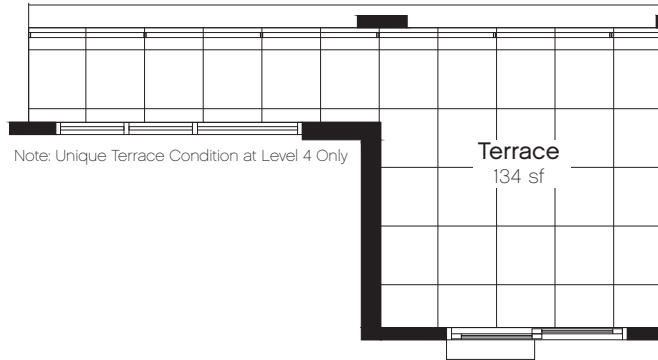
Note: Unique Terrace Condition at Level 4 Only



Prices and specifications are subject to change without notice. All areas and stated room dimensions are approximate and actual living area will vary from floor area stated. Floor area is measured in accordance with ONWHP bulletin #22. Vendor may substitute materials provided such materials are of quality equal to or better than the material provided for in the plans and specifications at the Vendor's discretion. Decorative and upgraded items displayed in marketing materials and/or the sales office are for display purposes only and are not included in the purchase price. The ceiling height of the unit will be approximately 9', measured from the upper surface of the concrete floor slab to the underside of the concrete ceiling slab or ceiling structure, provided however that various areas of the dwelling unit may contain (or be subject to) ceiling bulkheads and/or dropped ceilings, in order to facilitate the installation of structural components, mechanical systems and/or ductwork, and accordingly in those areas of the unit that are subject to said bulkheads and/or dropped ceilings the overall ceiling height will be reduced accordingly. E.&O.E.

# Type 1E

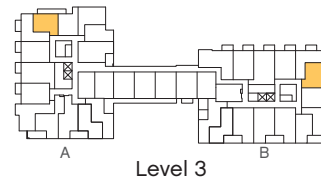
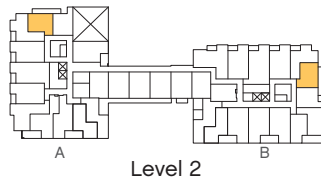
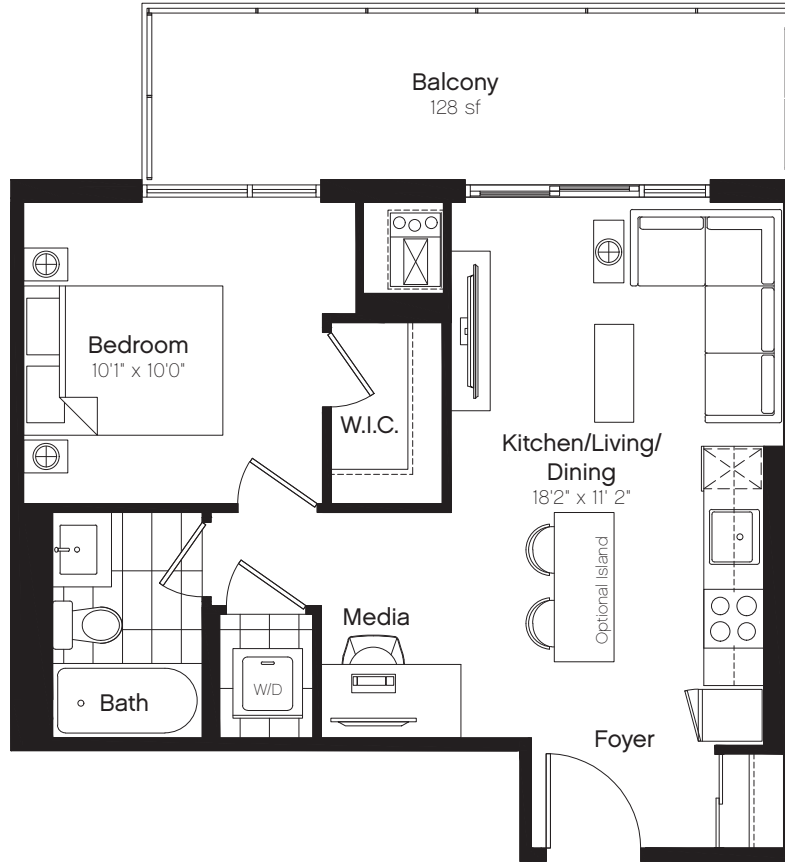
1 Bed, 1 Bath  
Interior: 527 sf  
Total: 586-661 sf



Prices and specifications are subject to change without notice. All areas and stated room dimensions are approximate and actual living area will vary from floor area stated. Floor area is measured in accordance with ONWHP bulletin #22. Vendor may substitute materials provided such materials are of quality equal to or better than the material provided for in the plans and specifications at the Vendor's discretion. Decorative and upgraded items displayed in marketing materials and/or the sales office are for display purposes only and are not included in the purchase price. The ceiling height of the unit will be approximately 9', measured from the upper surface of the concrete floor slab to the underside of the concrete ceiling slab or ceiling structure, provided however that various areas of the dwelling unit may contain (or be subject to) ceiling bulkheads and/or dropped ceilings, in order to facilitate the installation of structural components, mechanical systems and/or ductwork, and accordingly in those areas of the unit that are subject to said bulkheads and/or dropped ceilings the overall ceiling height will be reduced accordingly. E.&O.E.

# Type 1F

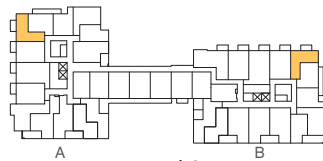
1 Bed, 1 Bath  
Interior: 528 sf  
Total: 656 sf





# Type 1G

1 Bed, 1 Bath  
Interior: 529 sf  
Total: 580 sf



Level 3

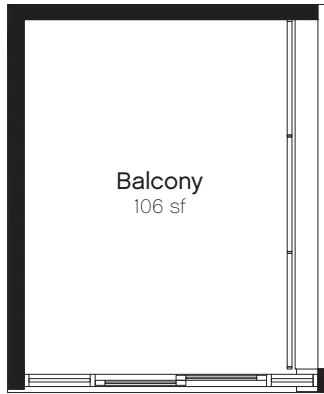


Prices and specifications are subject to change without notice. All areas and stated room dimensions are approximate and actual living area will vary from floor area stated. Floor area is measured in accordance with ONWHP bulletin #22. Vendor may substitute materials provided such materials are of quality equal to or better than the material provided for in the plans and specifications at the Vendor's discretion. Decorative and upgraded items displayed in marketing materials and/or the sales office are for display purposes only and are not included in the purchase price. The ceiling height of the unit will be approximately 9', measured from the upper surface of the concrete floor slab to the underside of the concrete ceiling slab or ceiling structure, provided however that various areas of the dwelling unit may contain (or be subject to) ceiling bulkheads and/or dropped ceilings, in order to facilitate the installation of structural components, mechanical systems and/or ductwork, and accordingly in those areas of the unit that are subject to said bulkheads and/or dropped ceilings the overall ceiling height will be reduced accordingly. E.&O.E.

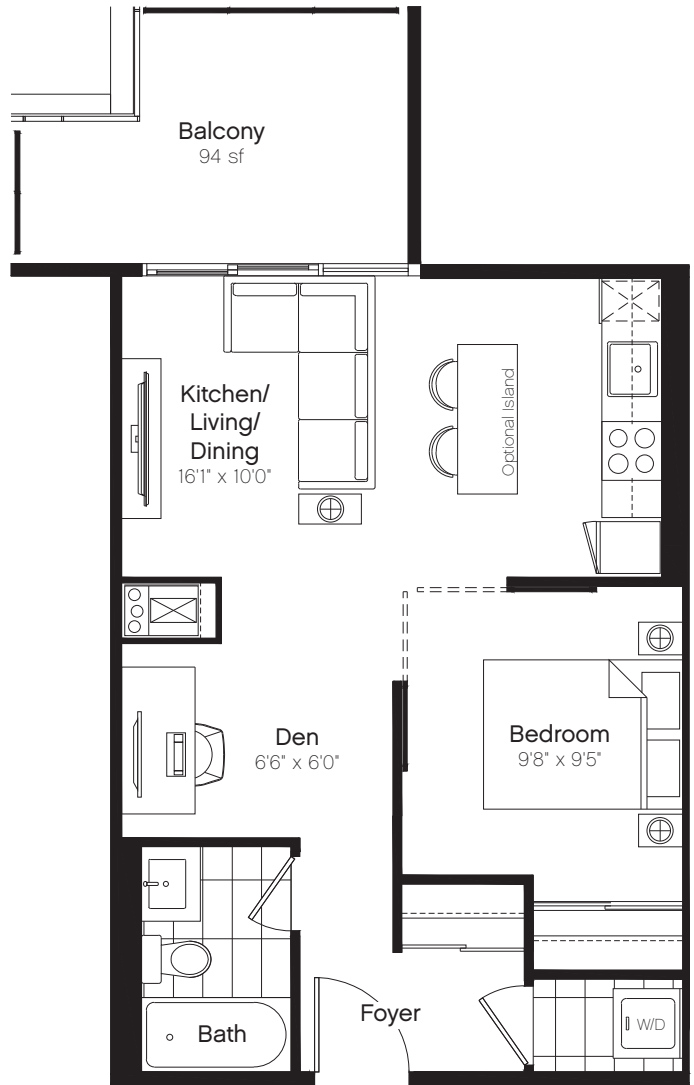


# Type 1H

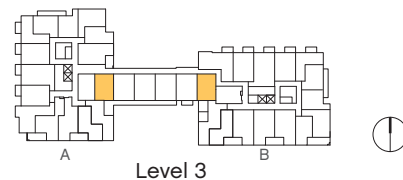
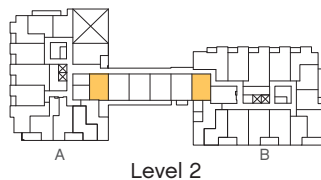
1 Bed, 1 Bath + Den  
Interior: 539 sf  
Total: 633-645 sf



Note: This Balcony Condition At Units B212 and B312

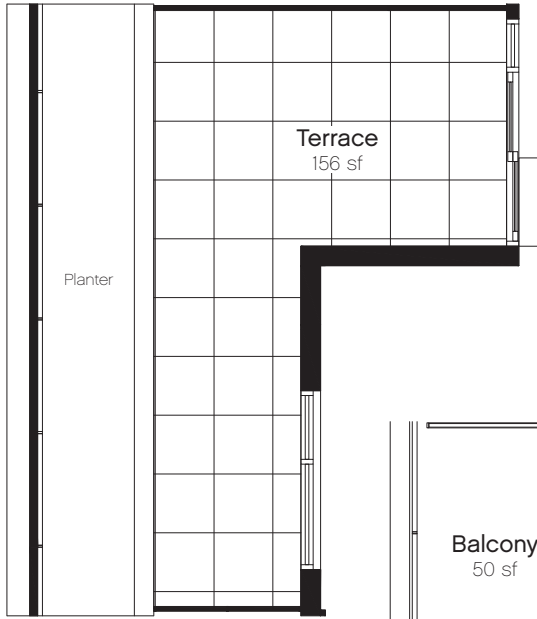


Note: This Balcony Condition at Units A210 and A312

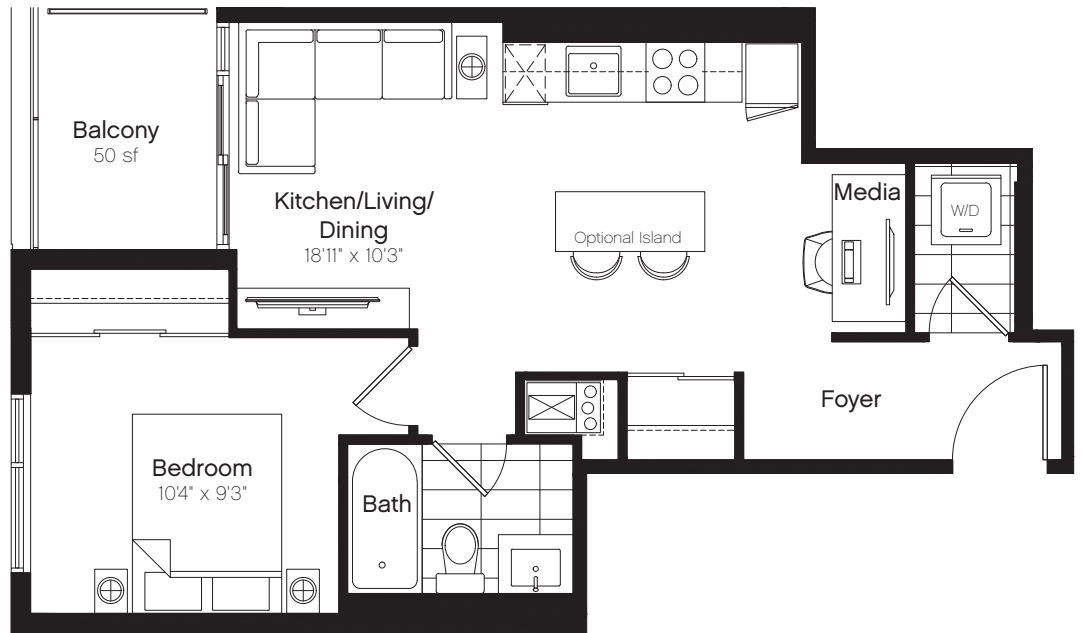


# Type 11

1 Bed, 1 Bath  
Interior: 543 sf  
Total: 593-699 sf



Note: Unique Terrace Condition At Level 4 Only

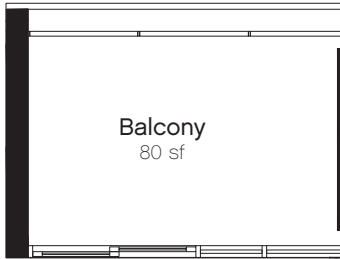


Note: Typical Balcony Condition Level 5-14

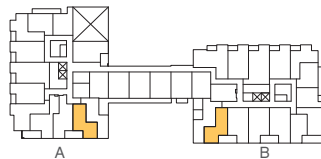
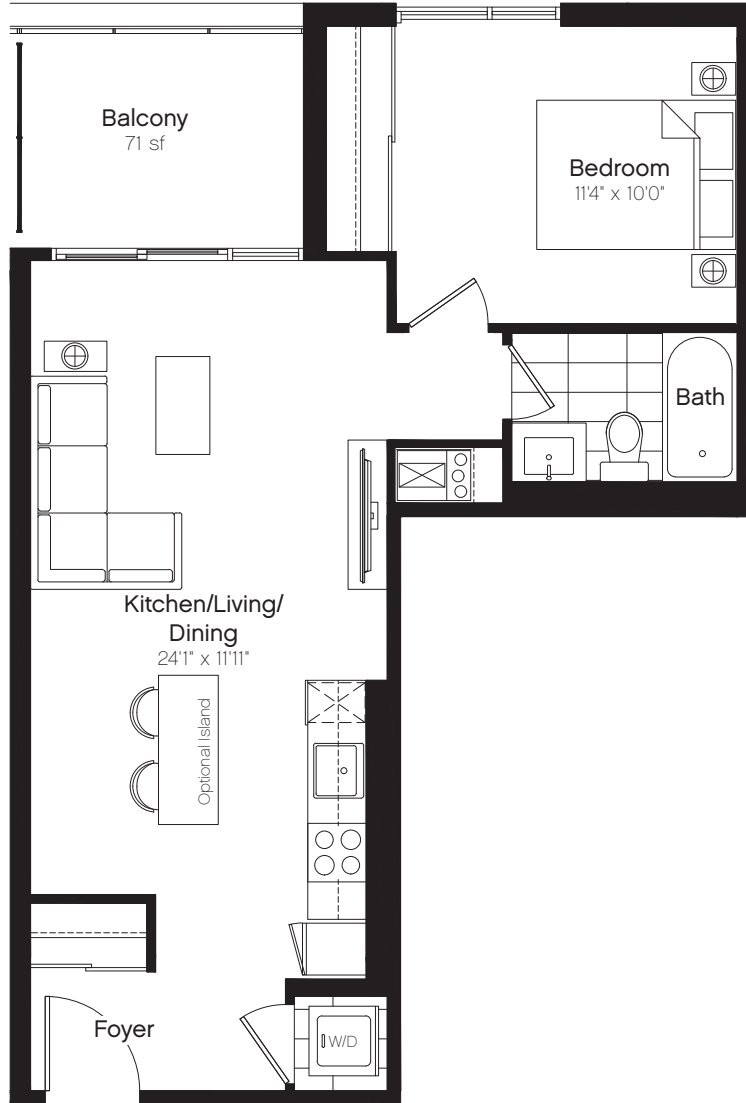


# Type 1J

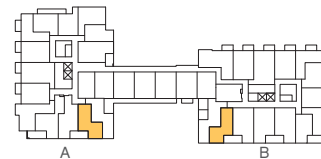
1 Bed, 1 Bath  
Interior: 584 sf  
Total: 655-664 sf



Note: Unique Balcony Condition at Units A212 And A314



Level 2



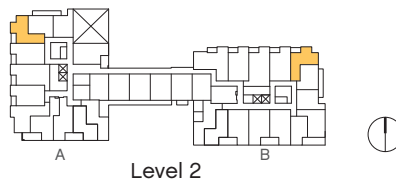
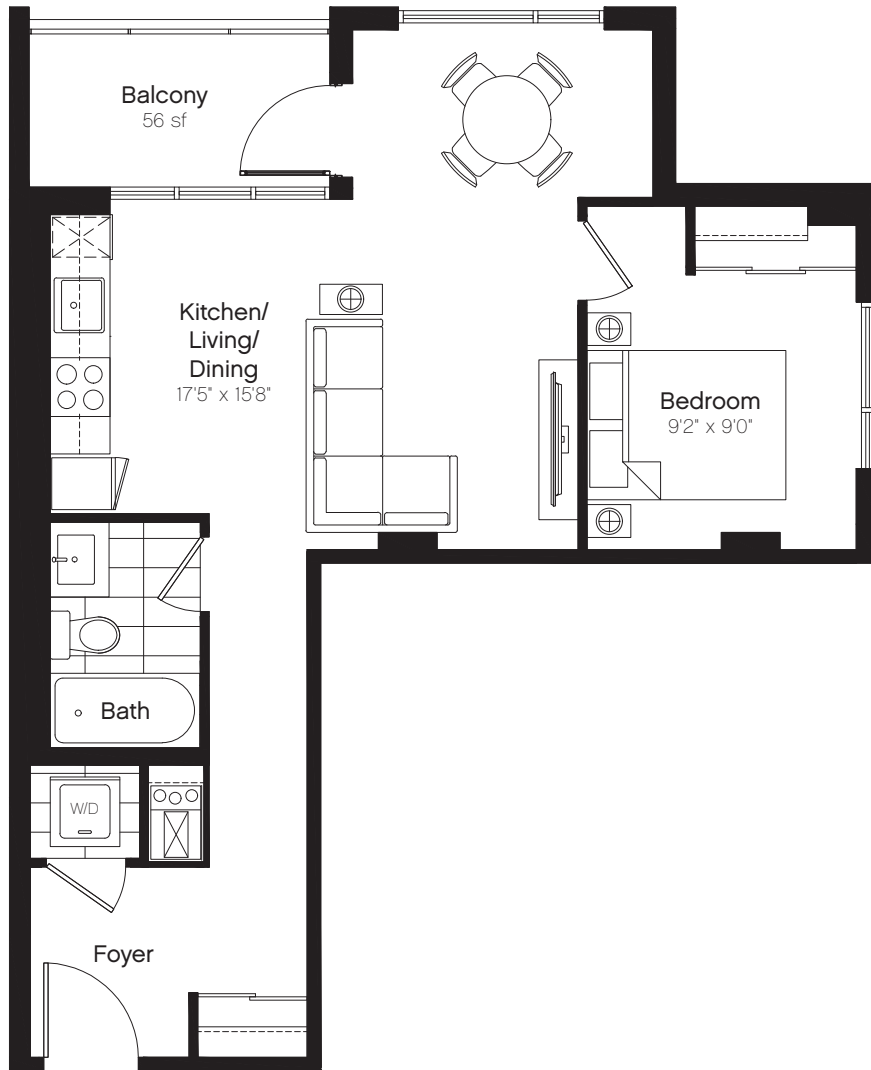
Level 3





# Type 1K

1 Bed, 1 Bath  
Interior: 596 sf  
Total: 652 sf

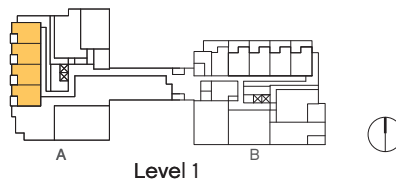
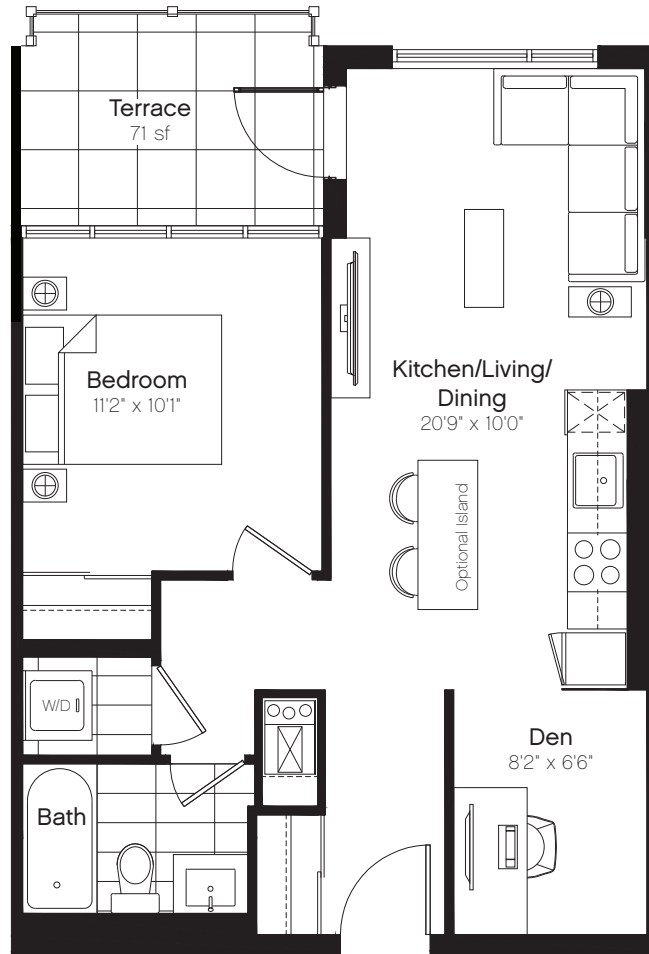


Prices and specifications are subject to change without notice. All areas and stated room dimensions are approximate and actual living area will vary from floor area stated. Floor area is measured in accordance with ONWHP bulletin #22. Vendor may substitute materials provided such materials are of quality equal to or better than the material provided for in the plans and specifications at the Vendor's discretion. Decorative and upgraded items displayed in marketing materials and/or the sales office are for display purposes only and are not included in the purchase price. The ceiling height of the unit will be approximately 9', measured from the upper surface of the concrete floor slab to the underside of the concrete ceiling slab or ceiling structure, provided however that various areas of the dwelling unit may contain (or be subject to) ceiling bulkheads and/or dropped ceilings, in order to facilitate the installation of structural components, mechanical systems and/or ductwork, and accordingly in those areas of the unit that are subject to said bulkheads and/or dropped ceilings the overall ceiling height will be reduced accordingly. E.&O.E.



# Type 1L(A)

1 Bed, 1 Bath + Den  
Interior: 598 sf  
Total: 669 sf

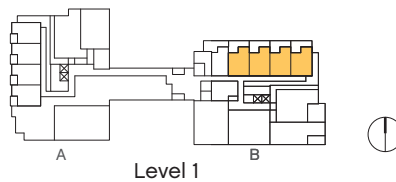
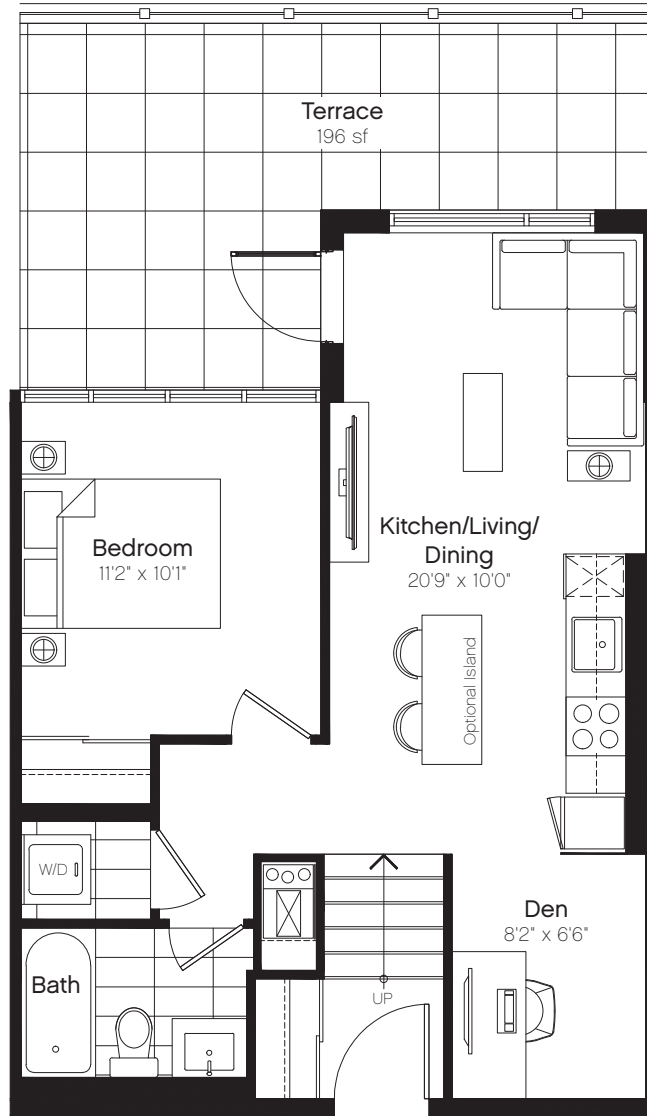


Prices and specifications are subject to change without notice. All areas and stated room dimensions are approximate and actual living area will vary from floor area stated. Floor area is measured in accordance with ONWHP bulletin #22. Vendor may substitute materials provided such materials are of quality equal to or better than the material provided for in the plans and specifications at the Vendor's discretion. Decorative and upgraded items displayed in marketing materials and/or the sales office are for display purposes only and are not included in the purchase price. The ceiling height of the unit will be approximately 9', measured from the upper surface of the concrete floor slab to the underside of the concrete ceiling slab or ceiling structure, provided however that various areas of the dwelling unit may contain (or be subject to) ceiling bulkheads and/or dropped ceilings, in order to facilitate the installation of structural components, mechanical systems and/or ductwork, and accordingly in those areas of the unit that are subject to said bulkheads and/or dropped ceilings the overall ceiling height will be reduced accordingly. E.&O.E.



# Type 1L(B)

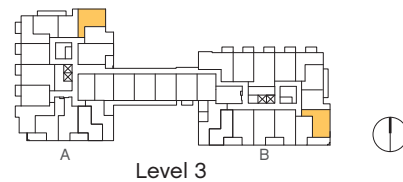
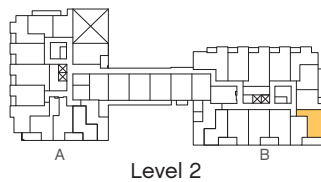
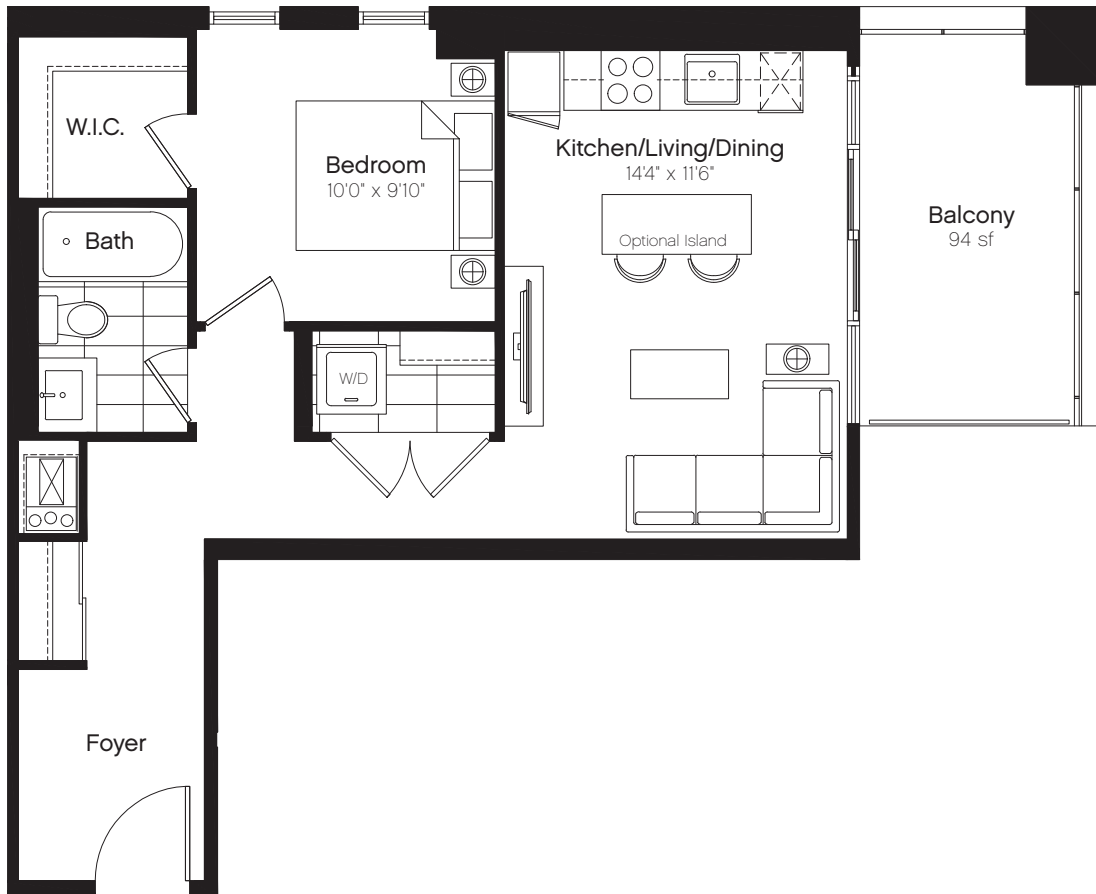
1 Bed, 1 Bath + Den  
Interior: 598 sf  
Total: 794 sf



Prices and specifications are subject to change without notice. All areas and stated room dimensions are approximate and actual living area will vary from floor area stated. Floor area is measured in accordance with ONWHP bulletin #22. Vendor may substitute materials provided such materials are of quality equal to or better than the material provided for in the plans and specifications at the Vendor's discretion. Decorative and upgraded items displayed in marketing materials and/or the sales office are for display purposes only and are not included in the purchase price. The ceiling height of the unit will be approximately 9', measured from the upper surface of the concrete floor slab to the underside of the concrete ceiling slab or ceiling structure, provided however that various areas of the dwelling unit may contain (or be subject to) ceiling bulkheads and/or dropped ceilings, in order to facilitate the installation of structural components, mechanical systems and/or ductwork, and accordingly in those areas of the unit that are subject to said bulkheads and/or dropped ceilings the overall ceiling height will be reduced accordingly. E.&O.E.

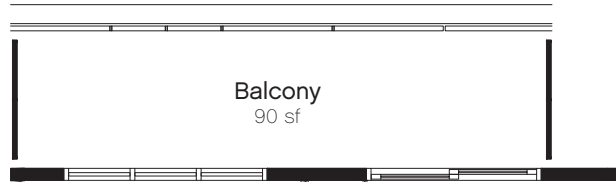
# Type 1M

1 Bed, 1 Bath  
Interior: 598 sf  
Total: 692 sf

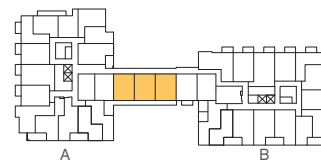
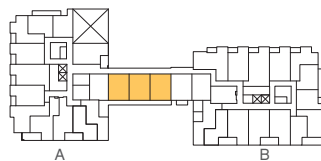
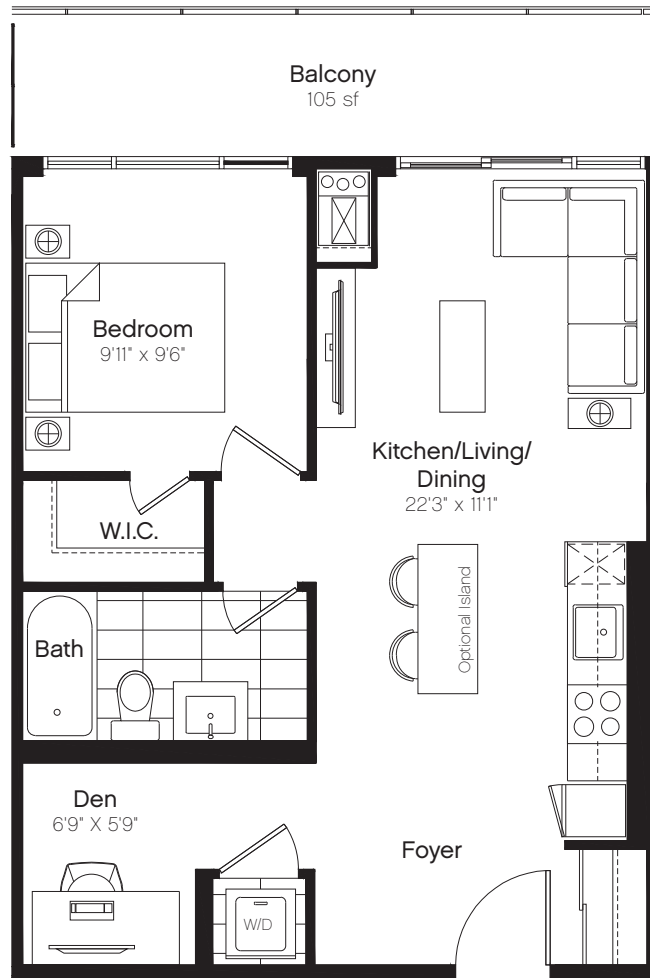


# Type 1N

1 Bed, 1 Bath + Den  
Interior: 600 sf  
Total: 690-705 sf



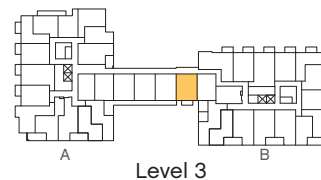
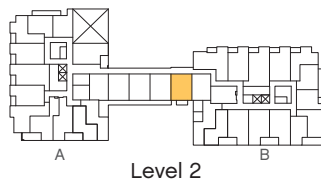
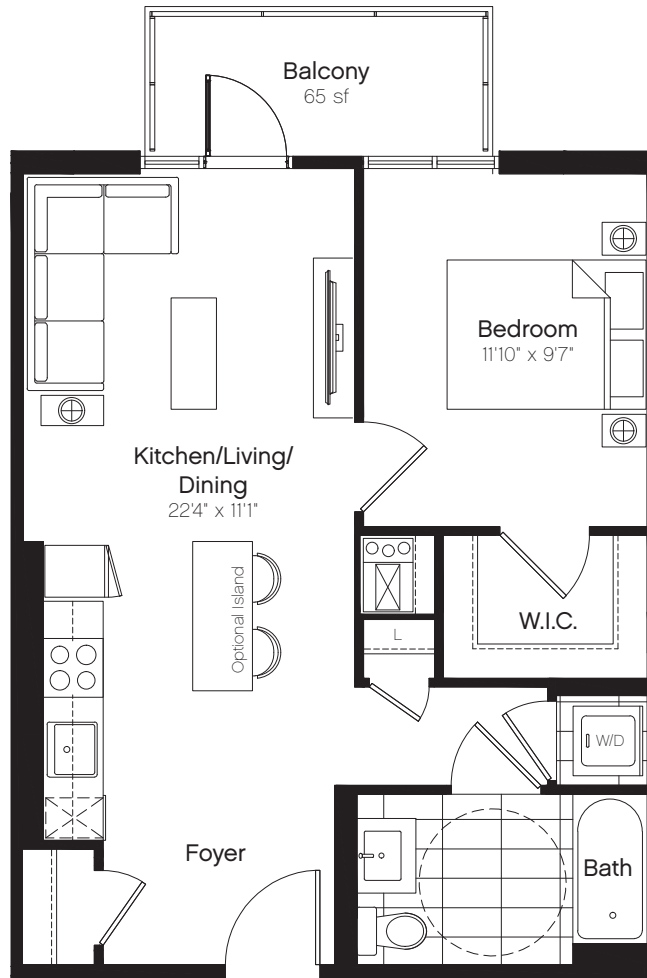
Note: Unique Balcony Condition at Units A209 and A311





# Type 10

1 Bed, 1 Bath  
Interior: 600 sf  
Total: 665 sf



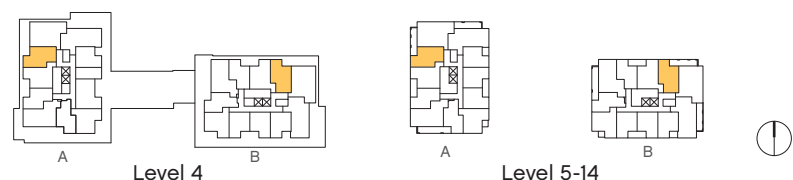
# Type 1P

1 Bed, 1 Bath + Den  
Interior: 631 sf  
Total: 690-765 sf



Note: Unique Terrace Condition At Level 4 Only

Note: Typical Balcony Condition Level 5-14

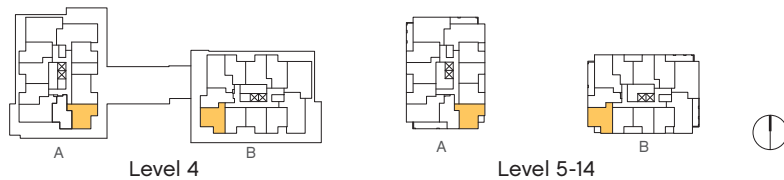


# Type 1Q

1 Bed, 1 Bath  
Interior: 637 sf  
Total: 687-1,013 sf



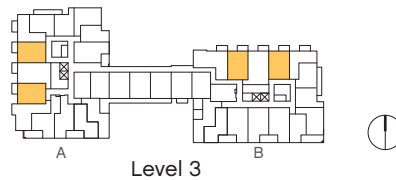
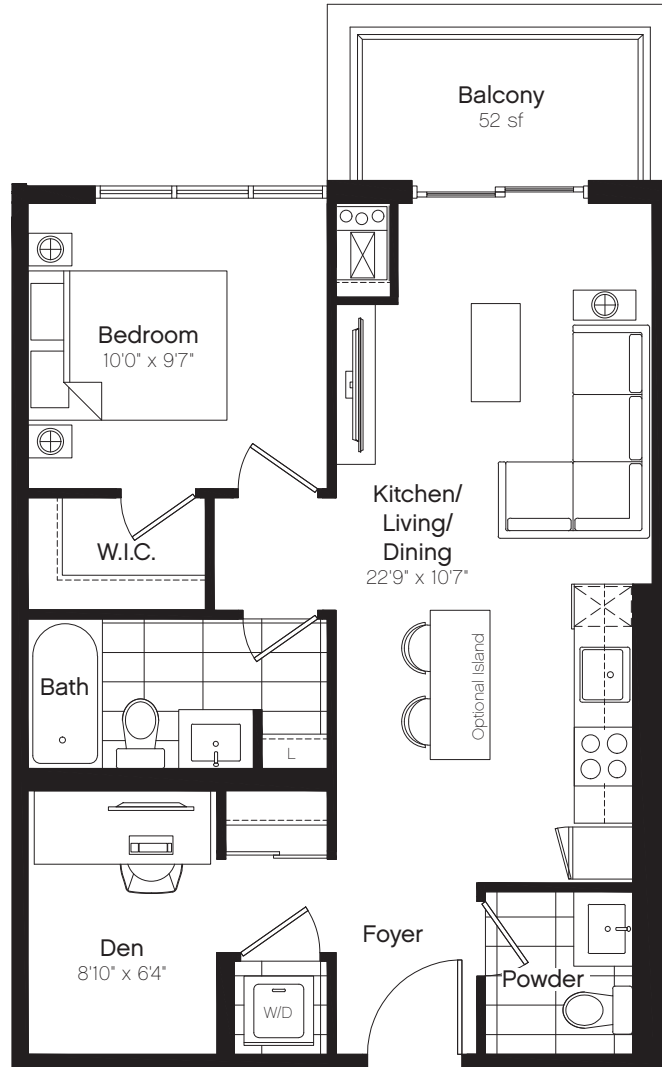
Note: Typical Balcony Condition Level 5-14





# Type 1R

1 Bed, 1.5 Bath + Den  
Interior: 642 sf  
Total: 694 sf



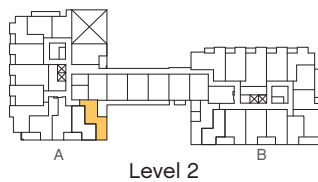
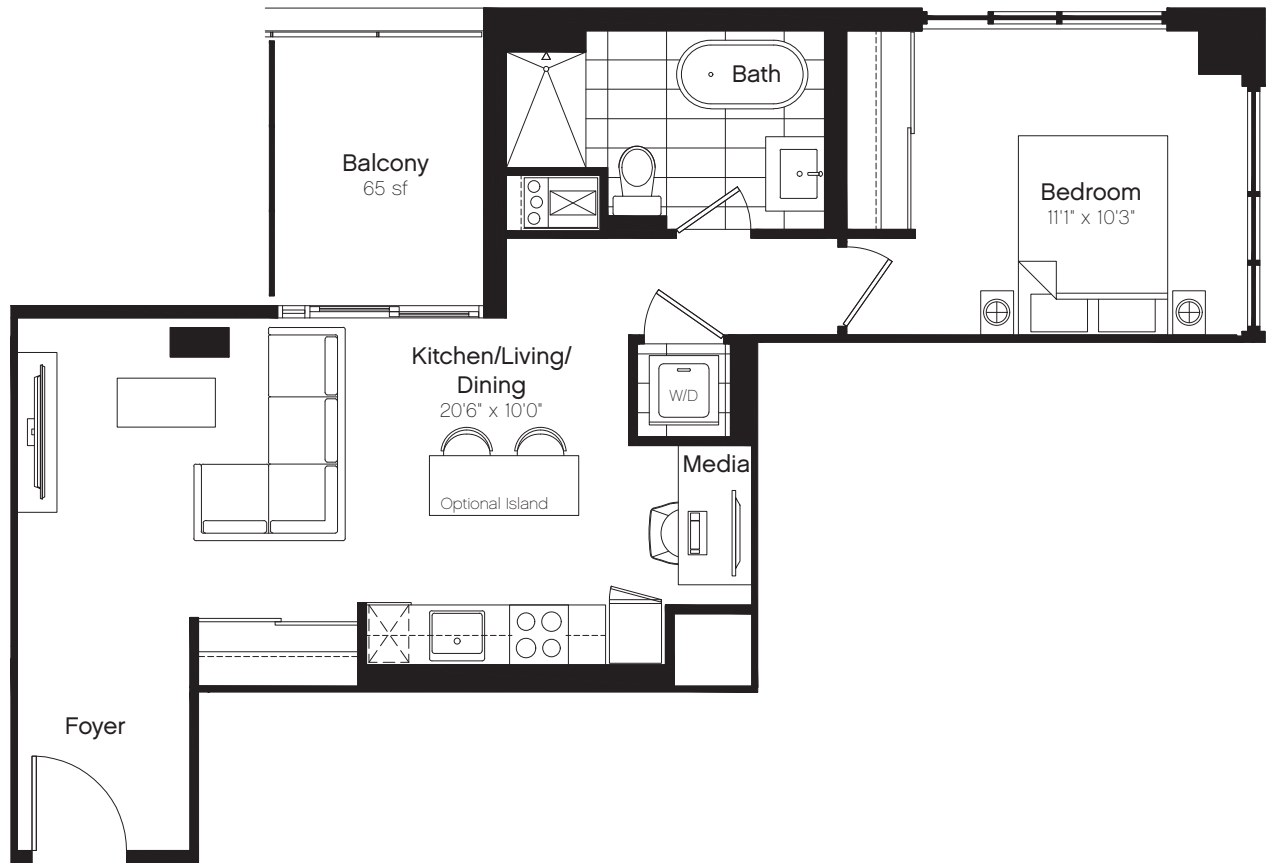
Level 3



Prices and specifications are subject to change without notice. All areas and stated room dimensions are approximate and actual living area will vary from floor area stated. Floor area is measured in accordance with ONWHP bulletin #22. Vendor may substitute materials provided such materials are of quality equal to or better than the material provided for in the plans and specifications at the Vendor's discretion. Decorative and upgraded items displayed in marketing materials and/or the sales office are for display purposes only and are not included in the purchase price. The ceiling height of the unit will be approximately 9', measured from the upper surface of the concrete floor slab to the underside of the concrete ceiling slab or ceiling structure, provided however that various areas of the dwelling unit may contain (or be subject to) ceiling bulkheads and/or dropped ceilings, in order to facilitate the installation of structural components, mechanical systems and/or ductwork, and accordingly in those areas of the unit that are subject to said bulkheads and/or dropped ceilings the overall ceiling height will be reduced accordingly. E.&O.E.

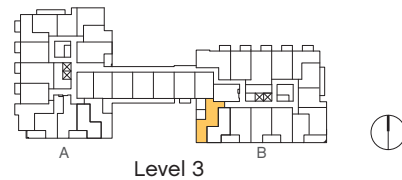
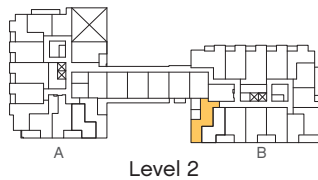
# Type 1S(A)

1 Bed, 1 Bath  
Interior: 647 sf  
Total: 712 sf



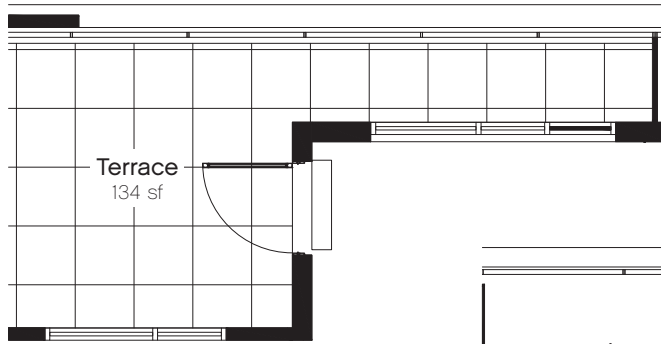
# Type 1S(B)

1 Bed, 1 Bath  
Interior: 694 sf  
Total: 775 sf

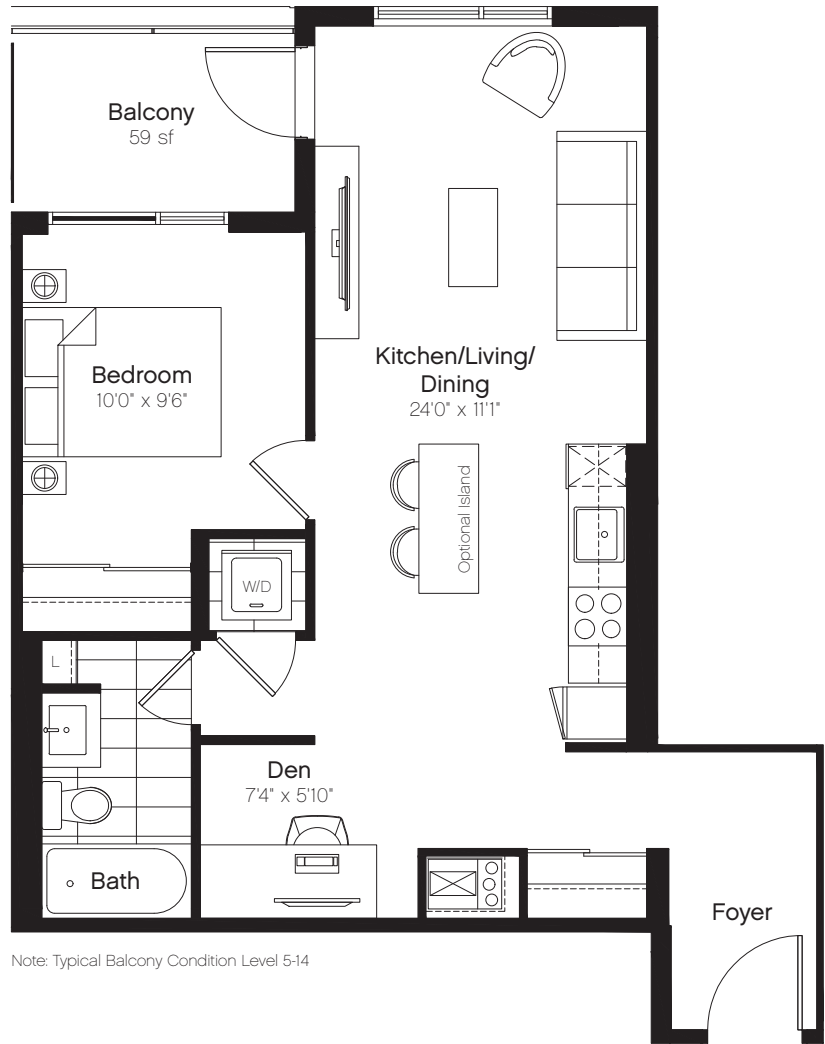


# Type 1T

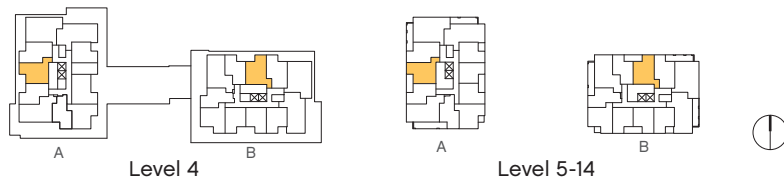
1 Bed, 1 Bath + Den  
Interior: 676 sf  
Total: 735-810 sf



Note: Unique Terrace Condition at Level 4 Only



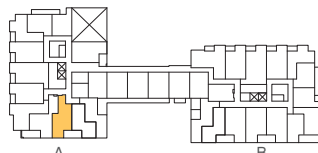
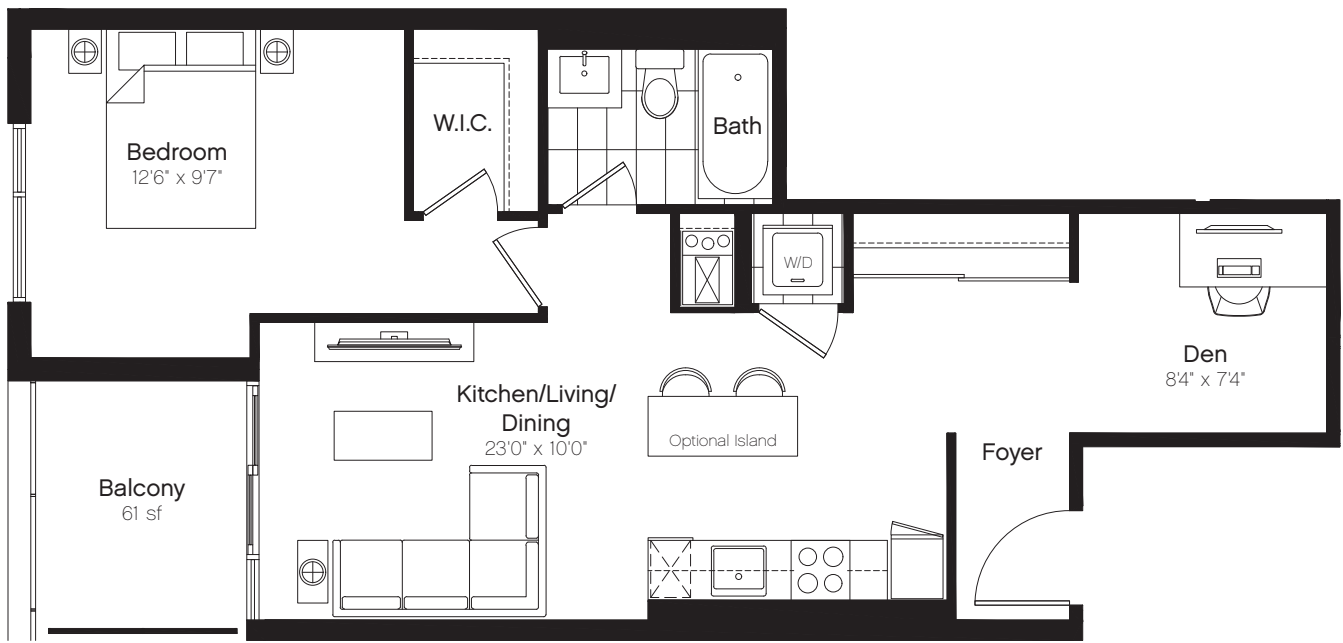
Note: Typical Balcony Condition Level 5-14



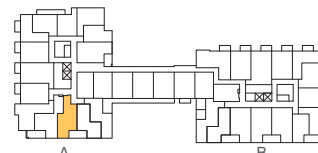
Prices and specifications are subject to change without notice. All areas and stated room dimensions are approximate and actual living area will vary from floor area stated. Floor area is measured in accordance with ONWHP bulletin #22. Vendor may substitute materials provided such materials are of quality equal to or better than the material provided for in the plans and specifications at the Vendor's discretion. Decorative and upgraded items displayed in marketing materials and/or the sales office are for display purposes only and are not included in the purchase price. The ceiling height of the unit will be approximately 9', measured from the upper surface of the concrete floor slab to the underside of the concrete ceiling slab or ceiling structure, provided however that various areas of the dwelling unit may contain (or be subject to) ceiling bulkheads and/or dropped ceilings, in order to facilitate the installation of structural components, mechanical systems and/or ductwork, and accordingly in those areas of the unit that are subject to said bulkheads and/or dropped ceilings the overall ceiling height will be reduced accordingly. E.&O.E.

# Type 1U

1 Bed, 1 Bath + Den  
Interior: 678 sf  
Total: 739 sf



Level 2



Level 3

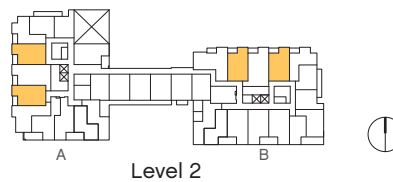
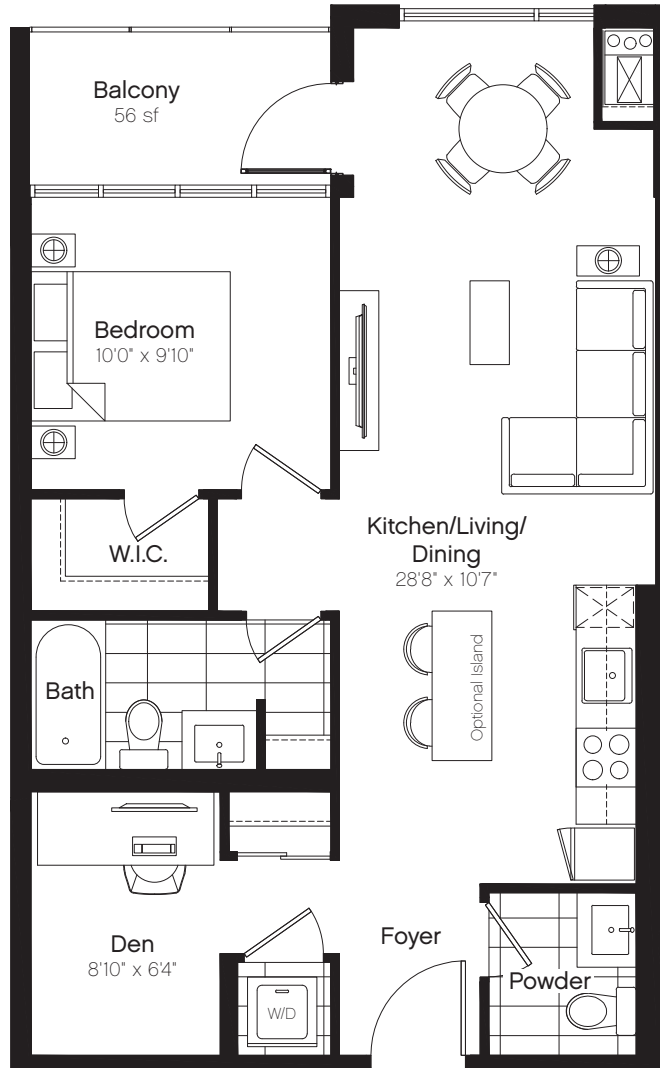






# Type 1V

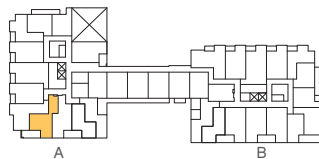
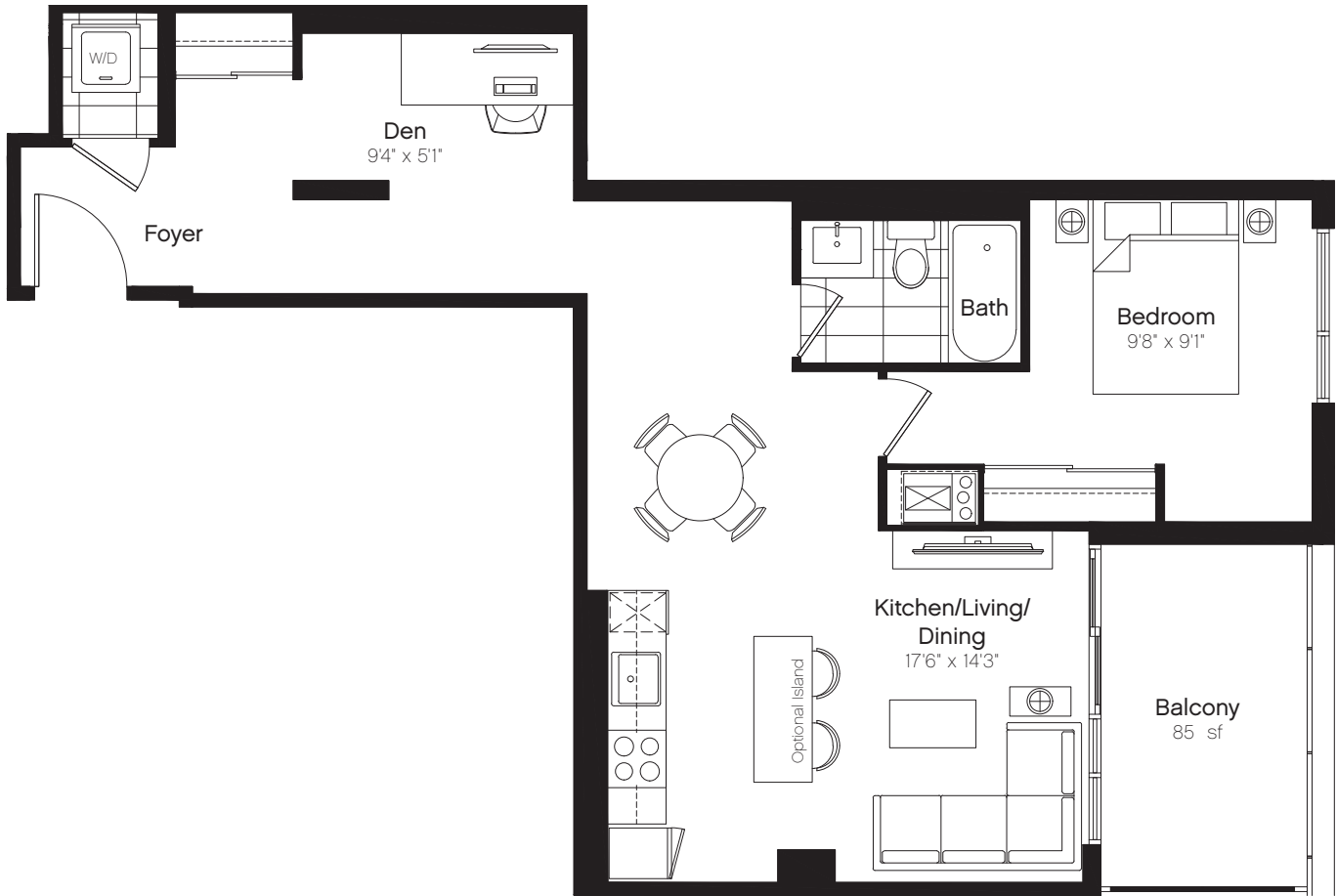
1 Bed, 1.5 Bath + Den  
Interior: 709 sf  
Total: 765 sf



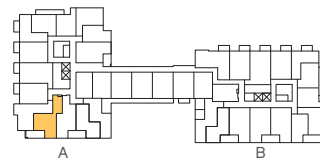
Prices and specifications are subject to change without notice. All areas and stated room dimensions are approximate and actual living area will vary from floor area stated. Floor area is measured in accordance with ONWHP bulletin #22. Vendor may substitute materials provided such materials are of quality equal to or better than the material provided for in the plans and specifications at the Vendor's discretion. Decorative and upgraded items displayed in marketing materials and/or the sales office are for display purposes only and are not included in the purchase price. The ceiling height of the unit will be approximately 9', measured from the upper surface of the concrete floor slab to the underside of the concrete ceiling slab or ceiling structure, provided however that various areas of the dwelling unit may contain (or be subject to) ceiling bulkheads and/or dropped ceilings, in order to facilitate the installation of structural components, mechanical systems and/or ductwork, and accordingly in those areas of the unit that are subject to said bulkheads and/or dropped ceilings the overall ceiling height will be reduced accordingly. E.&O.E.

# Type 1W

1 Bed, 1 Bath + Den  
Interior: 717 sf  
Total: 802 sf



Level 2



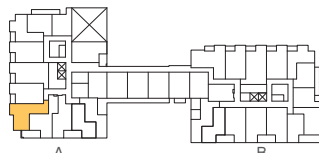
Level 3



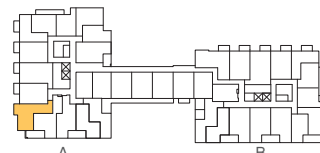


# Type 1X

1 Bed, 1 Bath + Den  
 Interior: 720 sf  
 Total: 777 sf



Level 2



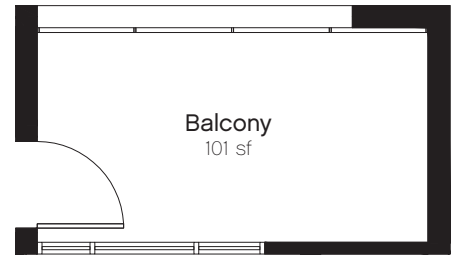
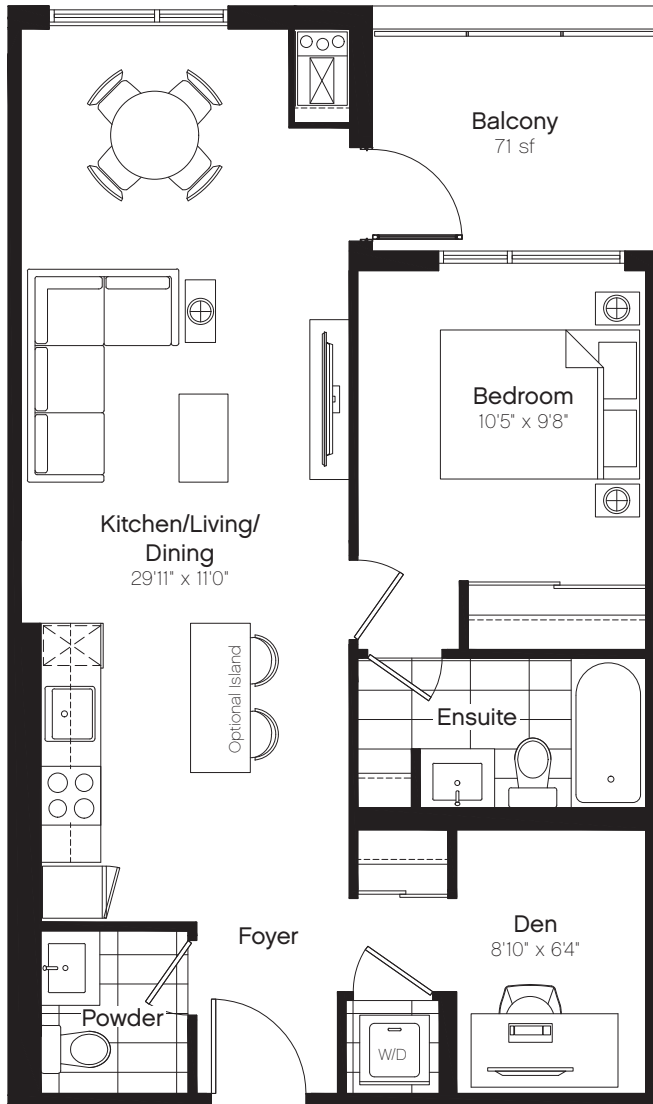
Level 3



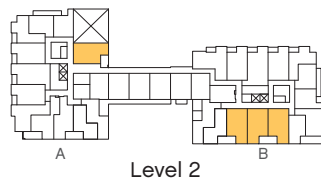
Prices and specifications are subject to change without notice. All areas and stated room dimensions are approximate and actual living area will vary from floor area stated. Floor area is measured in accordance with ONWHP bulletin #22. Vendor may substitute materials provided such materials are of quality equal to or better than the material provided for in the plans and specifications at the Vendor's discretion. Decorative and upgraded items displayed in marketing materials and/or the sales office are for display purposes only and are not included in the purchase price. The ceiling height of the unit will be approximately 9', measured from the upper surface of the concrete floor slab to the underside of the concrete ceiling slab or ceiling structure, provided however that various areas of the dwelling unit may contain (or be subject to) ceiling bulkheads and/or dropped ceilings, in order to facilitate the installation of structural components, mechanical systems and/or ductwork, and accordingly in those areas of the unit that are subject to said bulkheads and/or dropped ceilings the overall ceiling height will be reduced accordingly. E.&O.E.

# Type 1Y

1 Bed, 1.5 Bath + Den  
Interior: 720 sf  
Total: 791-821 sf



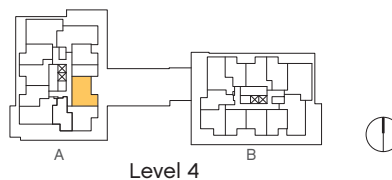
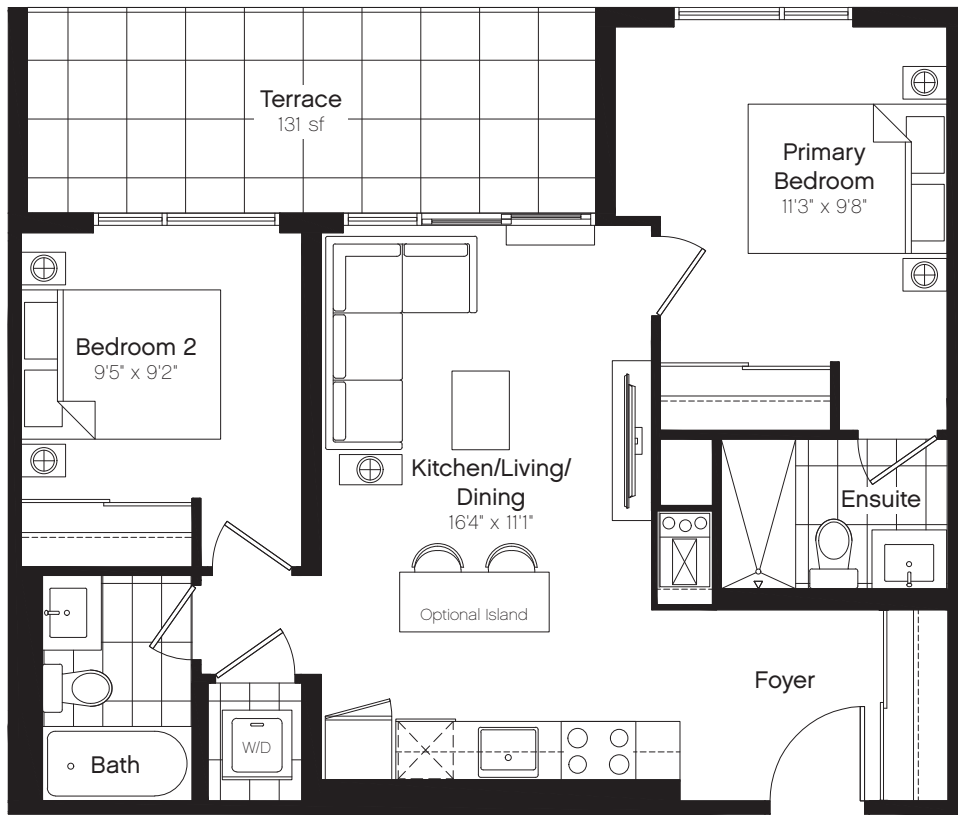
NOTE: UNIQUE BALCONY CONDITION AT UNITS A205 AND A307





# Type 2A

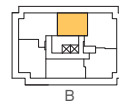
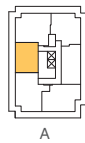
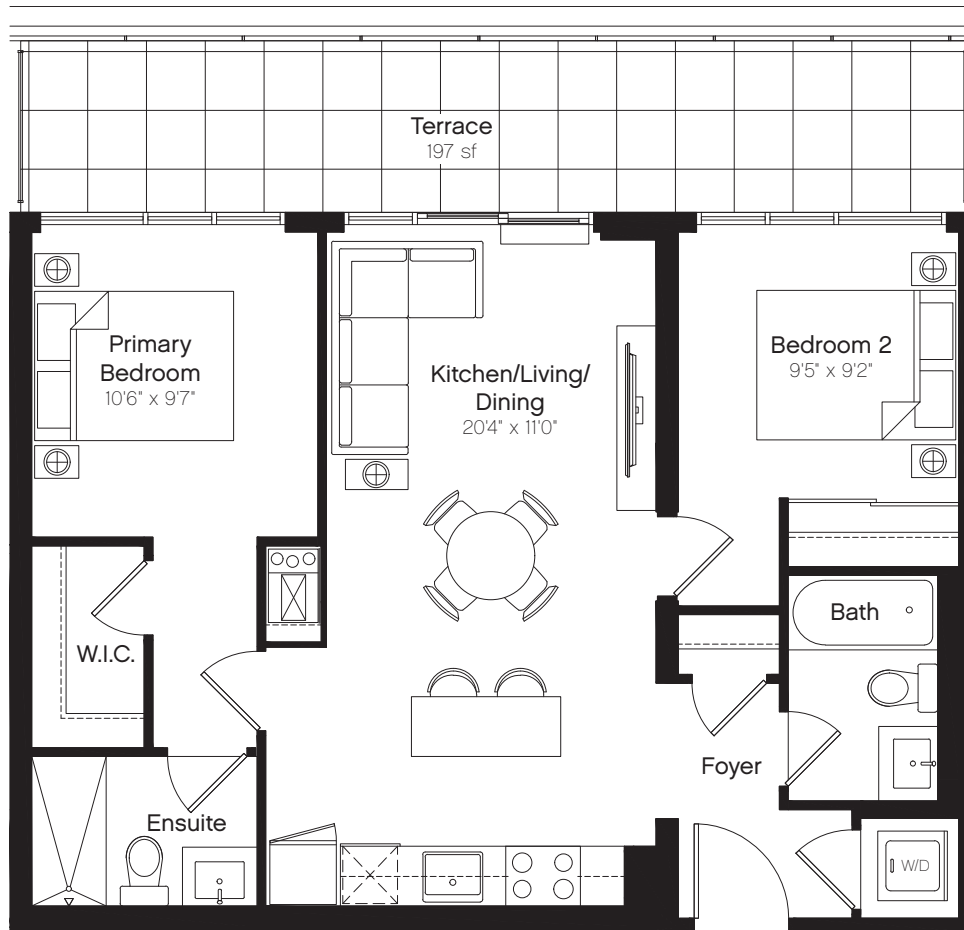
2 Bed, 2 Bath  
Interior: 720 sf  
Total: 851 sf



Prices and specifications are subject to change without notice. All areas and stated room dimensions are approximate and actual living area will vary from floor area stated. Floor area is measured in accordance with ONWHP bulletin #22. Vendor may substitute materials provided such materials are of quality equal to or better than the material provided for in the plans and specifications at the Vendor's discretion. Decorative and upgraded items displayed in marketing materials and/or the sales office are for display purposes only and are not included in the purchase price. The ceiling height of the unit will be approximately 9', measured from the upper surface of the concrete floor slab to the underside of the concrete ceiling slab or ceiling structure, provided however that various areas of the dwelling unit may contain (or be subject to) ceiling bulkheads and/or dropped ceilings, in order to facilitate the installation of structural components, mechanical systems and/or ductwork, and accordingly in those areas of the unit that are subject to said bulkheads and/or dropped ceilings the overall ceiling height will be reduced accordingly. E.&O.E.

# Type 2B

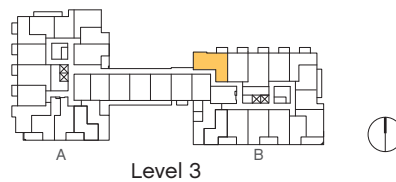
2 Bed, 2 Bath  
Interior: 776 sf  
Total: 973 sf



Level 15

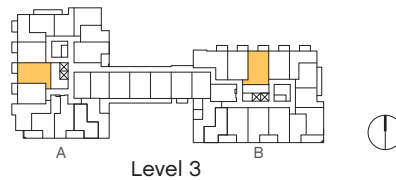
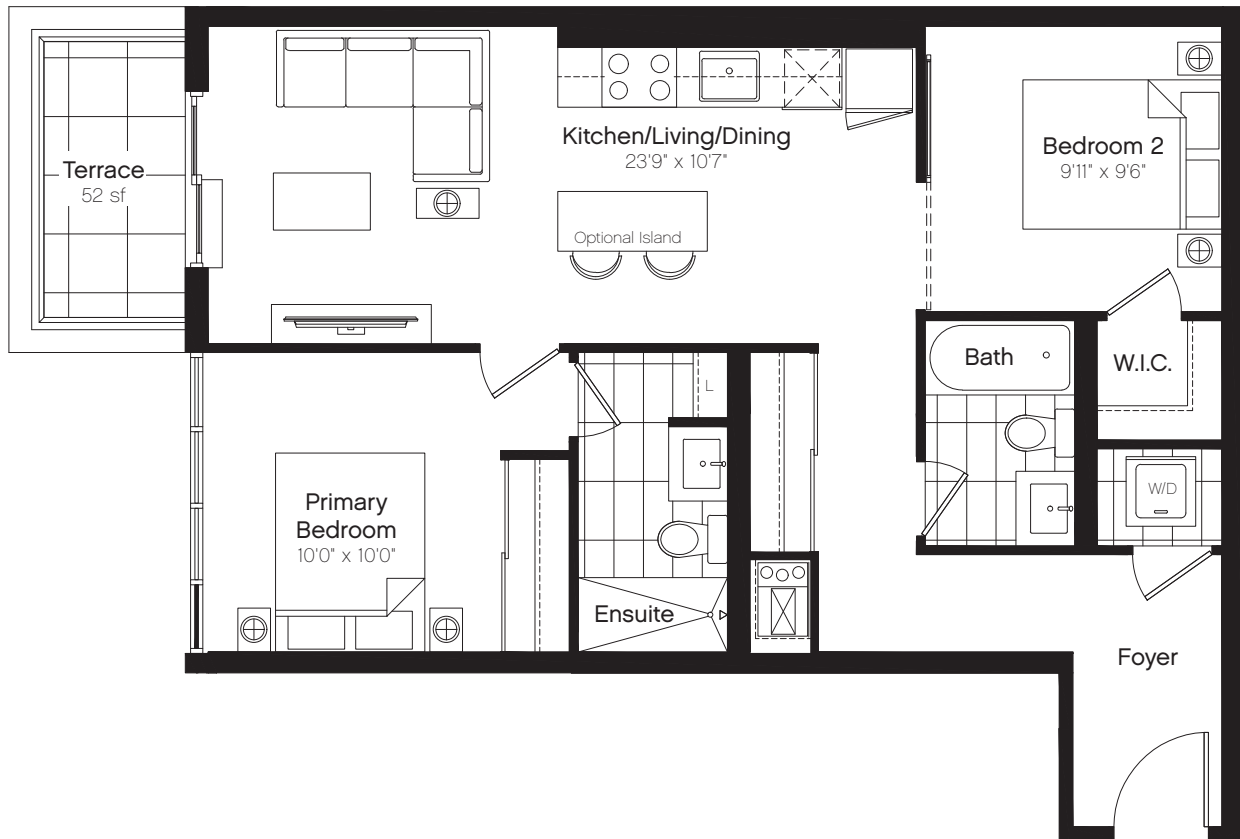
# Type 2C

2 Bed, 2 Bath  
Interior: 779 sf  
Total: 831 sf



# Type 2D

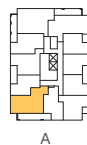
2 Bed, 2 Bath  
Interior: 809 sf  
Total: 861 sf





# Type 2E

2 Bed, 2 Bath  
Interior: 812 sf  
Total: 981 sf



Level 5-14

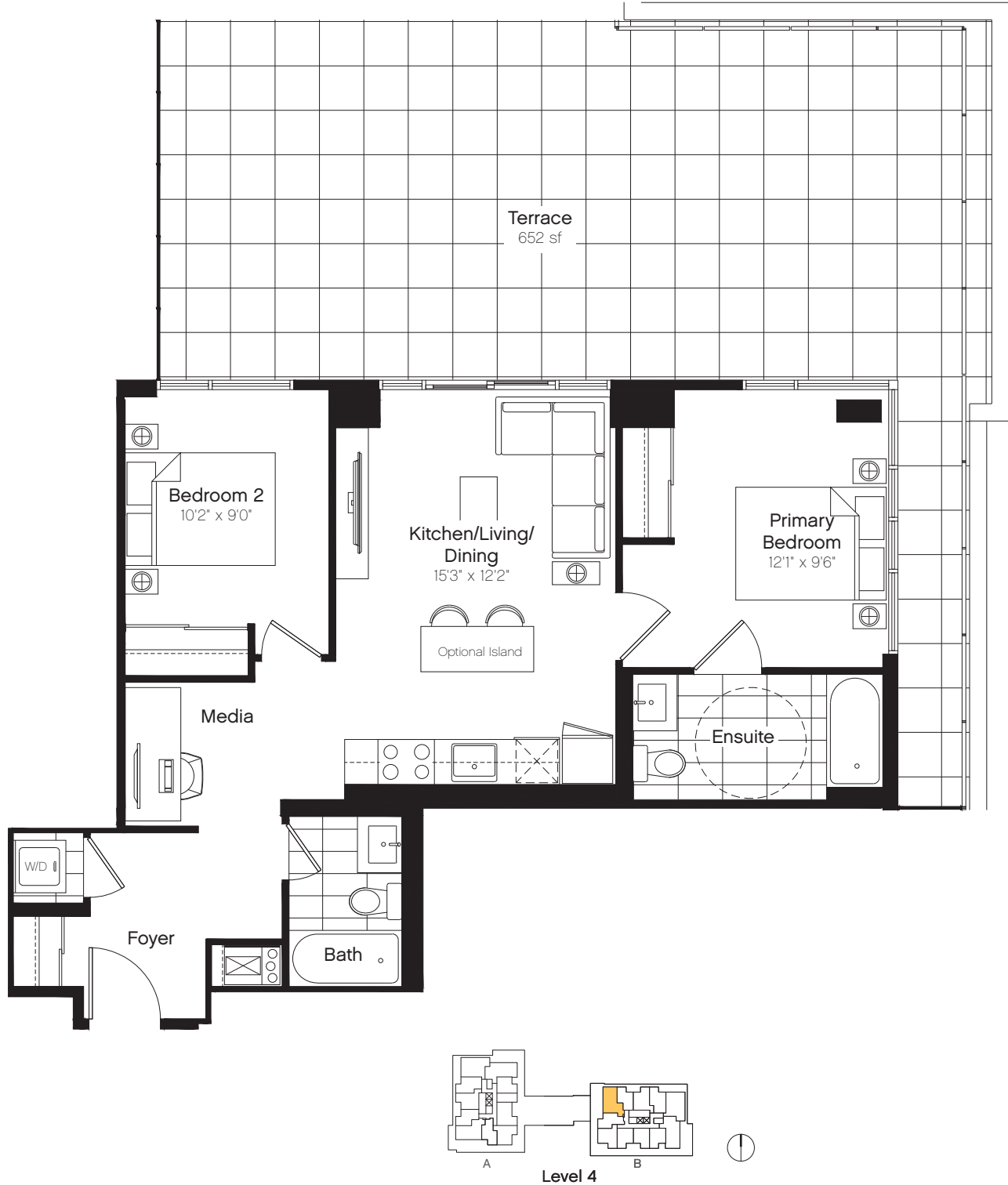
# Type 2E-T(A)

2 Bed, 2 Bath  
Interior: 812 sf  
Total: 1,332 sf



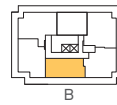
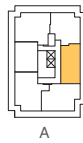
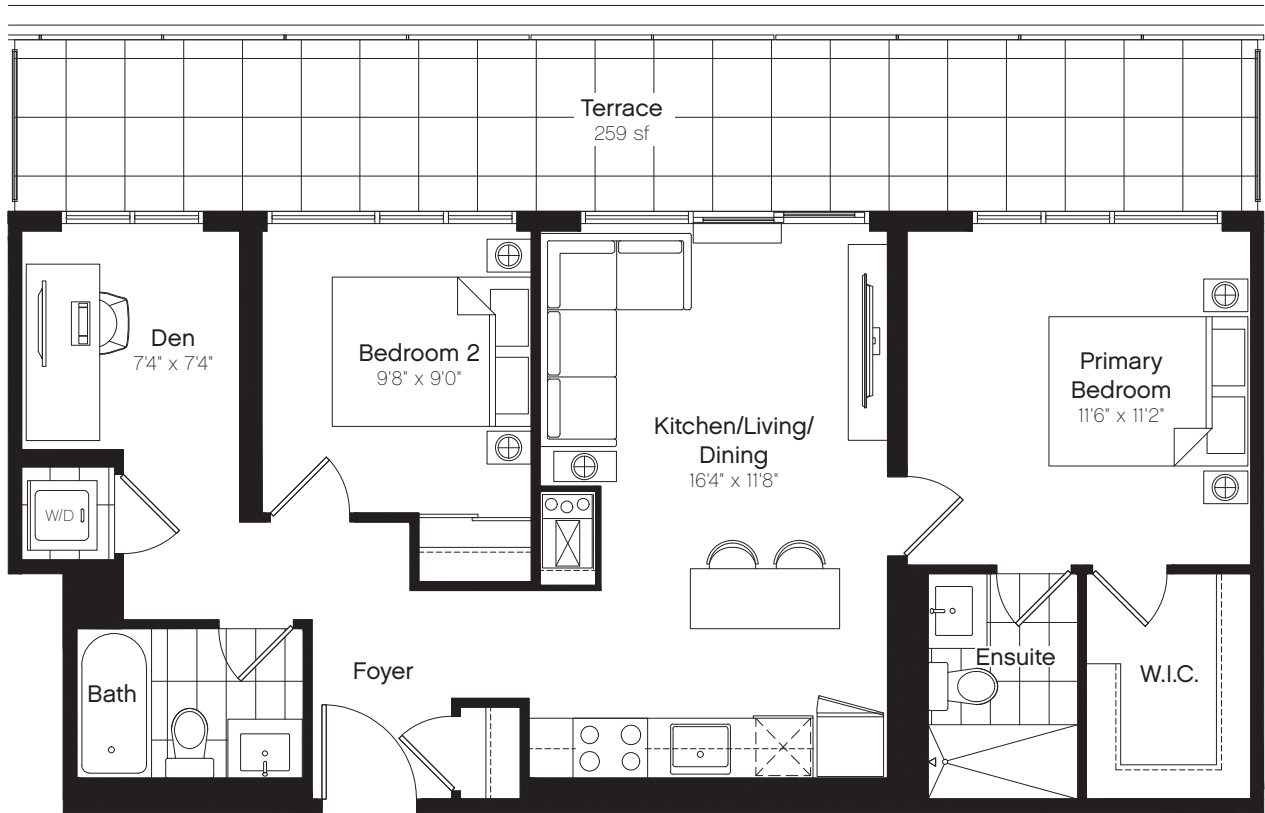
# Type 2E-T(B)

2 Bed, 2 Bath  
Interior: 812 sf  
Total: 1,464 sf



# Type 2F

2 Bed, 2 Bath + Den  
Interior: 823 sf  
Total: 1,082 sf



Level 15

# Type 2G

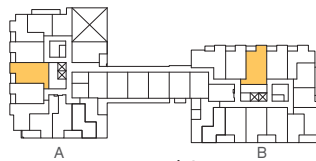
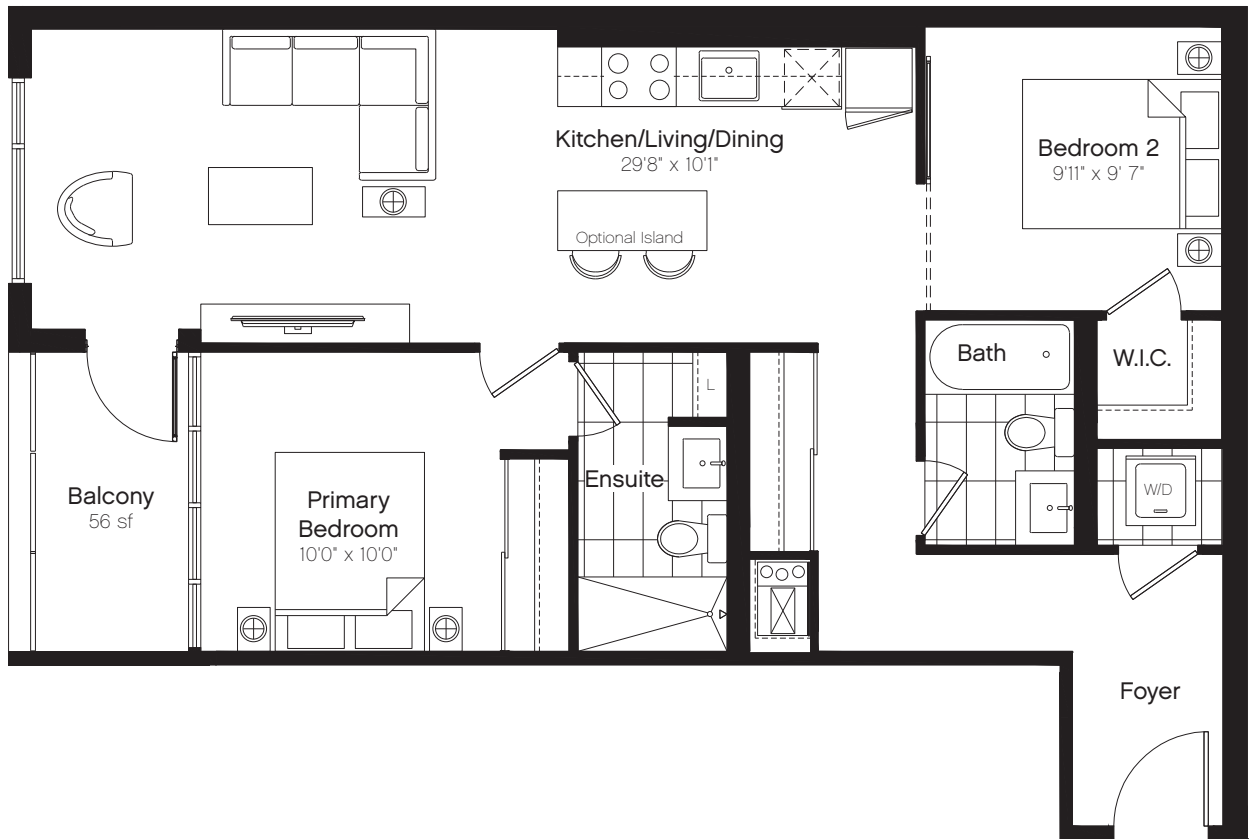
2 Bed, 2 Bath  
Interior: 847 sf  
Total: 916 sf





# Type 2H

2 Bed, 2 Bath  
Interior: 876 sf  
Total: 932 sf



Level 2



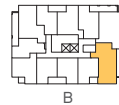
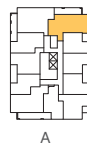
Prices and specifications are subject to change without notice. All areas and stated room dimensions are approximate and actual living area will vary from floor area stated. Floor area is measured in accordance with ONWHP bulletin #22. Vendor may substitute materials provided such materials are of quality equal to or better than the material provided for in the plans and specifications at the Vendor's discretion. Decorative and upgraded items displayed in marketing materials and/or the sales office are for display purposes only and are not included in the purchase price. The ceiling height of the unit will be approximately 9', measured from the upper surface of the concrete floor slab to the underside of the concrete ceiling slab or ceiling structure, provided however that various areas of the dwelling unit may contain (or be subject to) ceiling bulkheads and/or dropped ceilings, in order to facilitate the installation of structural components, mechanical systems and/or ductwork, and accordingly in those areas of the unit that are subject to said bulkheads and/or dropped ceilings the overall ceiling height will be reduced accordingly. E.&O.E.

# Type 21

2 Bed, 2 Bath + Den  
Interior: 882 sf  
Total: 1,063 sf



Note: Typical Balcony Condition Level 5-14



Level 5-14



# Type 2I-T

2 Bed, 2 Bath + Den  
Interior: 882 sf  
Total: 1,438 sf



Note: Unique Terrace Condition at Level 4 Only



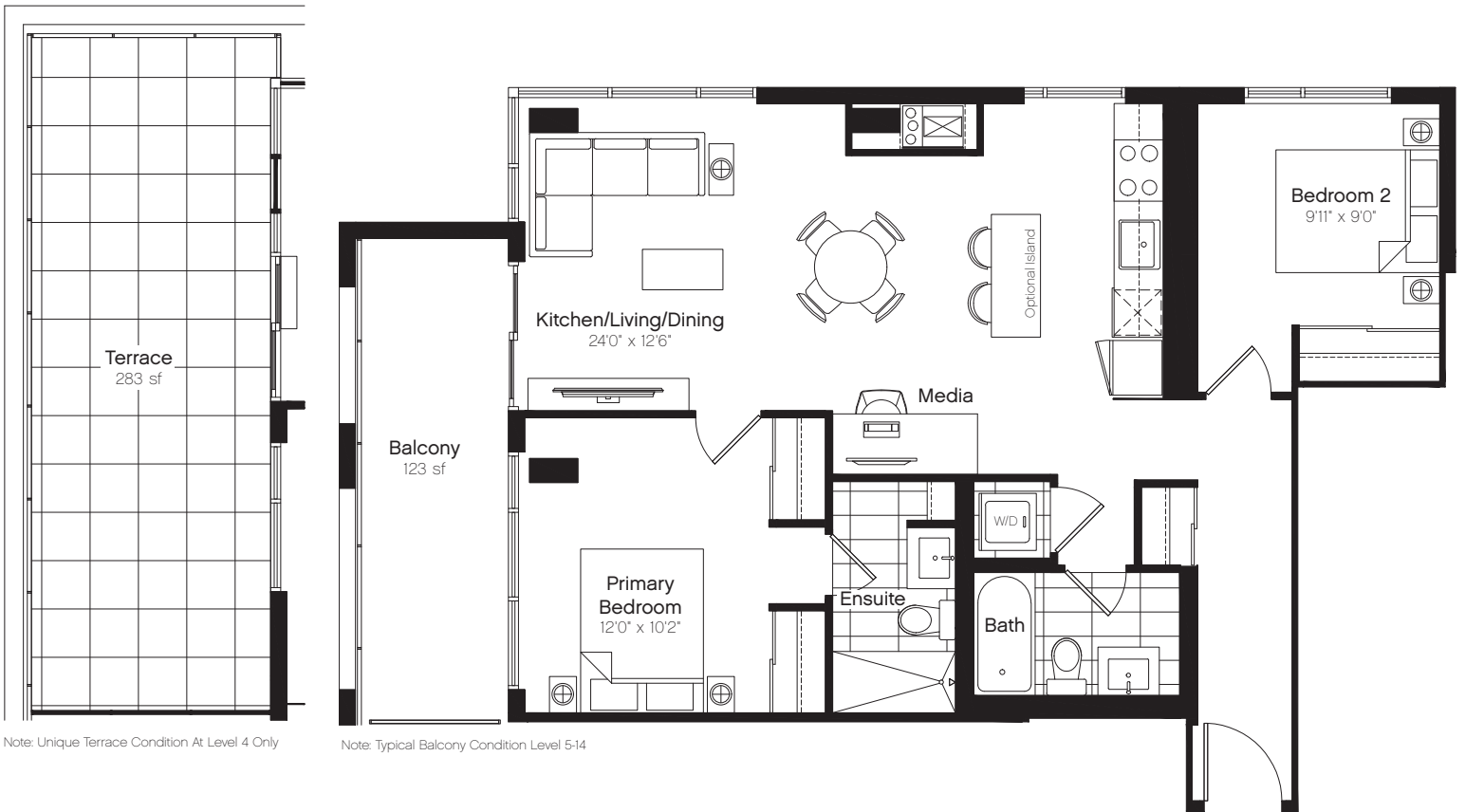
Prices and specifications are subject to change without notice. All areas and stated room dimensions are approximate and actual living area will vary from floor area stated. Floor area is measured in accordance with ONWHP bulletin #22. Vendor may substitute materials provided such materials are of quality equal to or better than the material provided for in the plans and specifications at the Vendor's discretion. Decorative and upgraded items displayed in marketing materials and/or the sales office are for display purposes only and are not included in the purchase price. The ceiling height of the unit will be approximately 9', measured from the upper surface of the concrete floor slab to the underside of the concrete ceiling slab or ceiling structure, provided however that various areas of the dwelling unit may contain (or be subject to) ceiling bulkheads and/or dropped ceilings, in order to facilitate the installation of structural components, mechanical systems and/or ductwork, and accordingly in those areas of the unit that are subject to said bulkheads and/or dropped ceilings the overall ceiling height will be reduced accordingly. E.&O.E.





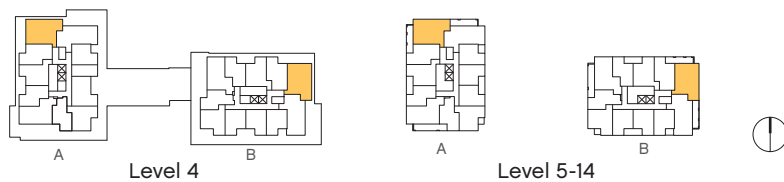
# Type 2J

2 Bed, 2 Bath  
 Interior: 923 sf  
 Total: 1,046-1,206 sf



Note: Unique Terrace Condition At Level 4 Only

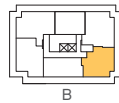
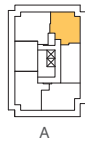
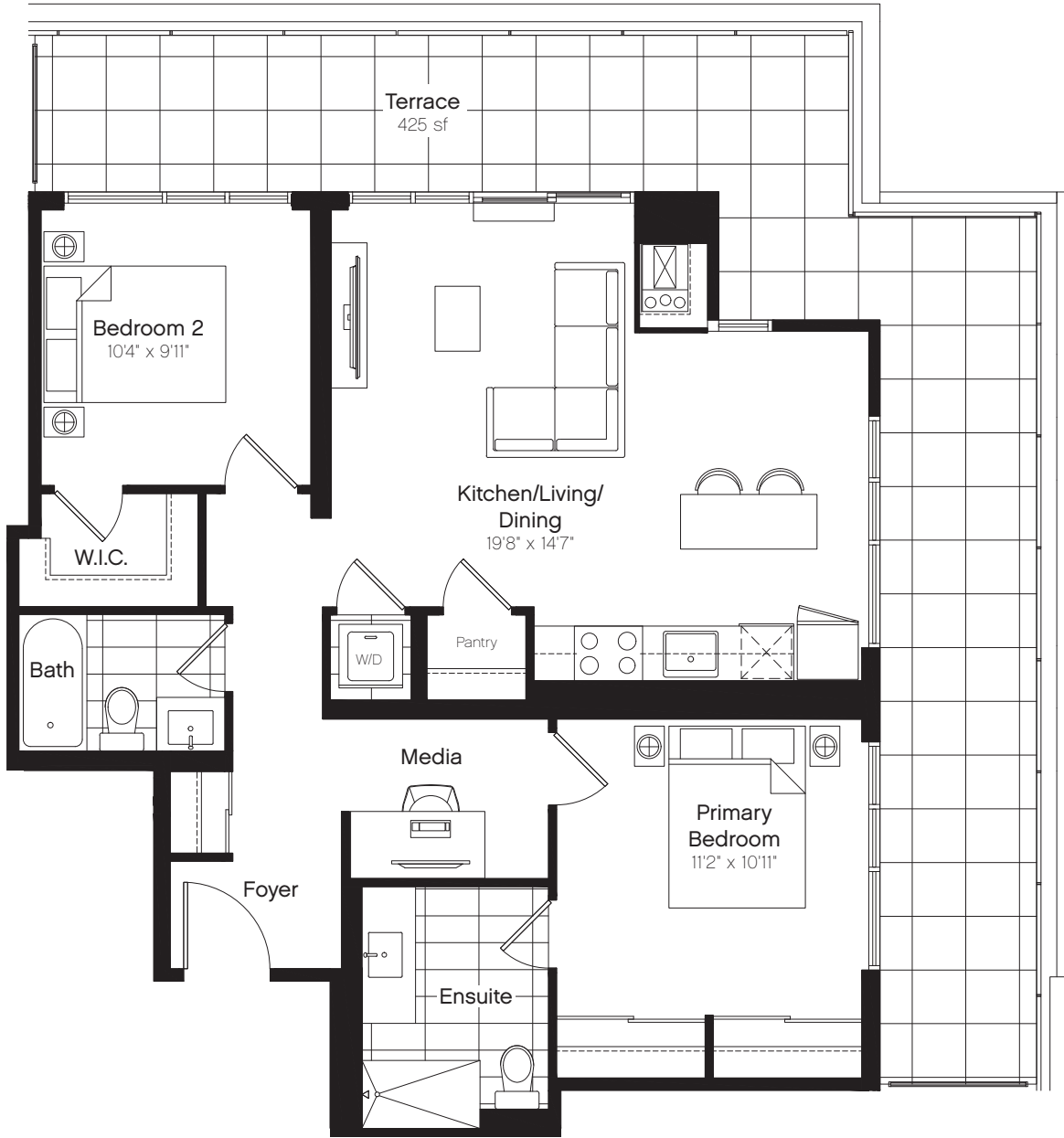
Note: Typical Balcony Condition Level 5-14



Prices and specifications are subject to change without notice. All areas and stated room dimensions are approximate and actual living area will vary from floor area stated. Floor area is measured in accordance with ONWHP bulletin #22. Vendor may substitute materials provided such materials are of quality equal to or better than the material provided for in the plans and specifications at the Vendor's discretion. Decorative and upgraded items displayed in marketing materials and/or the sales office are for display purposes only and are not included in the purchase price. The ceiling height of the unit will be approximately 9', measured from the upper surface of the concrete floor slab to the underside of the concrete ceiling slab or ceiling structure, provided however that various areas of the dwelling unit may contain (or be subject to) ceiling bulkheads and/or dropped ceilings, in order to facilitate the installation of structural components, mechanical systems and/or ductwork, and accordingly in those areas of the unit that are subject to said bulkheads and/or dropped ceilings the overall ceiling height will be reduced accordingly. E.&O.E.

# Type 2K

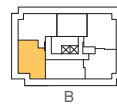
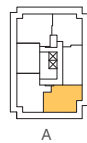
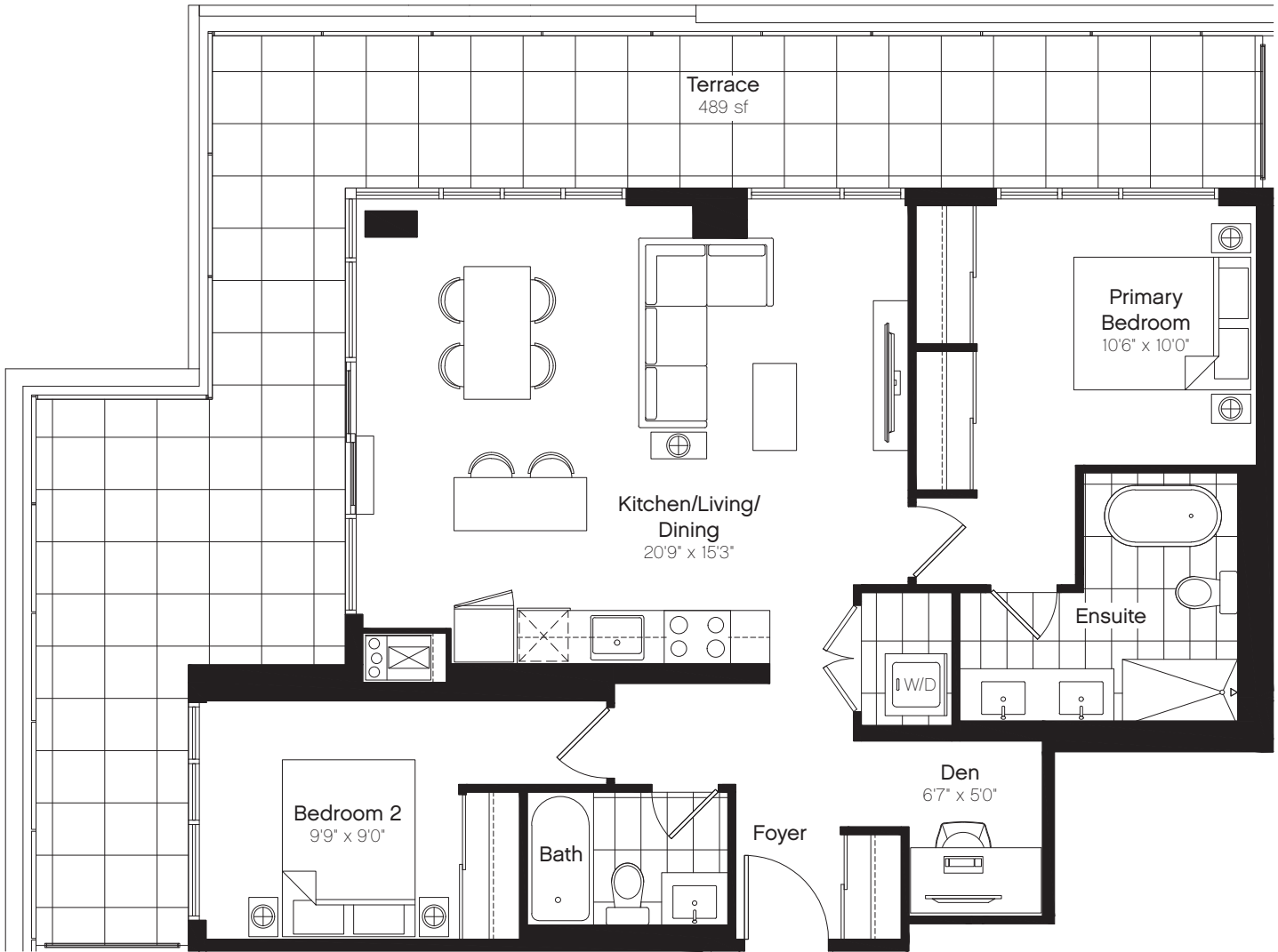
2 Bed, 2 Bath  
Interior: 943 sf  
Total: 1,368 sf



Level 15

# Type 2L

2 Bed, 2 Bath + Den  
Interior: 990 sf  
Total: 1,479 sf



Level 15

# Type 2M

2 Bed, 2 Bath  
Interior: 1,090 sf  
Total: 1,568 sf



Level 15

# Type 2N

2 Bed, 2 Bath  
Interior: 1,122 sf  
Total: 1,598 sf



Level 15